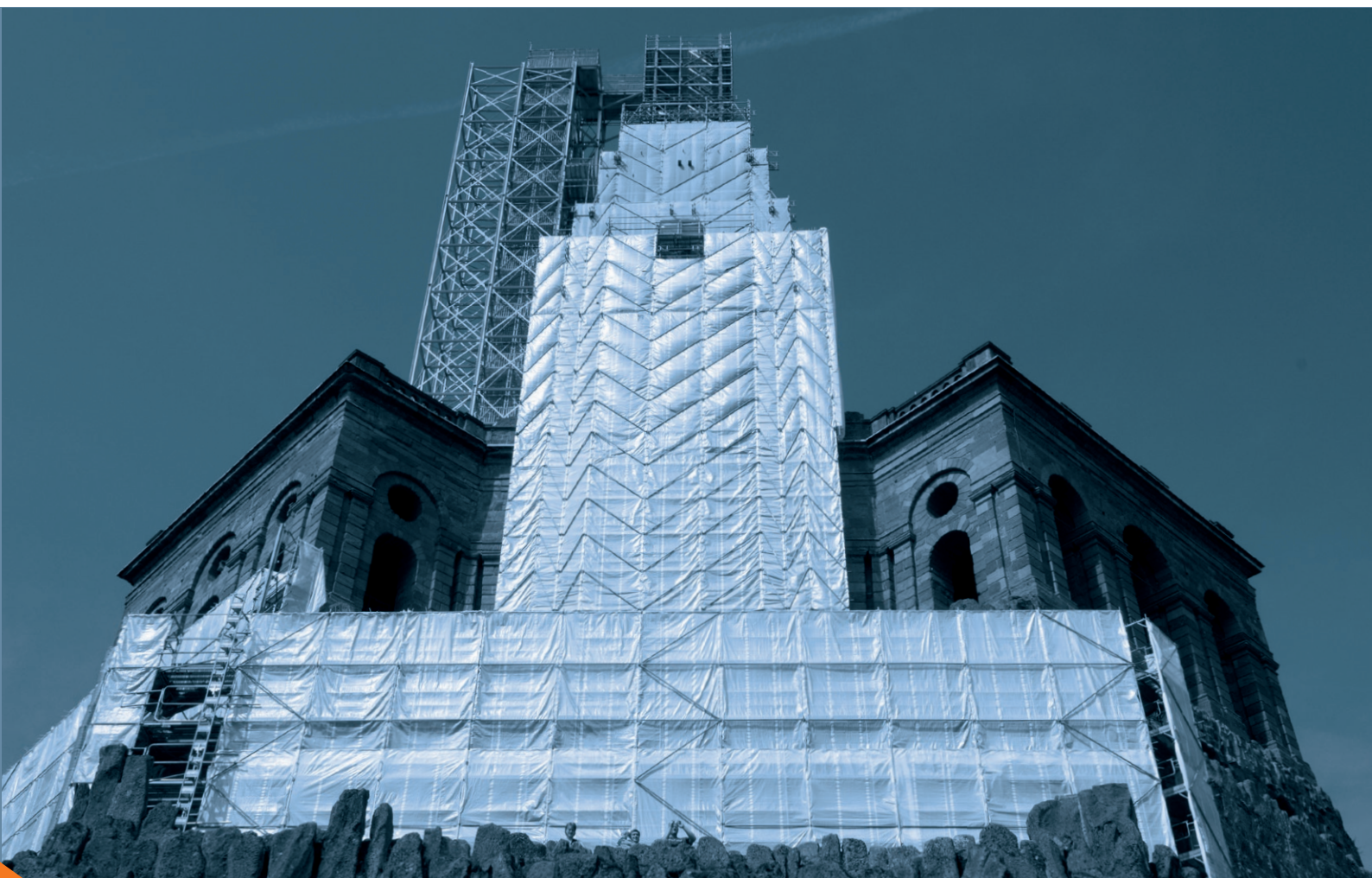




SMART DETAILS
FRAMESCAFF | FAÇADE SCAFFOLDING



FRAMESCAFF

FAÇADE SCAFFOLDING

**SMART
DETAILS
GREAT
SOLUTIONS!**

 **scafom-rux**

Management

Volker Rux
Managing Director


+49 (0)2331 47 09-100
+49 (0)151 16 20 65 00
volker.rux@scafom-rux.de

Marco Hiby
Sales Management


+49 (0)2331 47 09-200
+49 (0)151 16 20 65 01
marco.hiby@scafom-rux.de

Engineering

Michael Nordmeier
Technical Manager


+49 (0)2331 47 09-310
+49 (0)170 91 67 007
michael.nordmeier@scafom-rux.de

Anja Brüne-Bernard
Technical Department


+49 (0)2331 47 09-320
anja.brune-bernard@scafom-rux.de

Rental

Stephan Winterhoff
Rental Manager


+49 (0)2331 47 09-114
+49 (0)171 56 57 432
stephan.winterhoff@scafom-rux.de

Philine Lülting
Rental


+49 (0)2331 47 09-204
philine.lueling@scafom-rux.de

Heiko Ulrich
Rental


+49 (0)2331 47 09-205
heiko.ulrich@scafom-rux.de

**SMART DETAILS
GREAT SOLUTIONS!**



NEWS,
INFORMATION,
DOWNLOADS,
MOVIES, EVENTS,
WORKSHOPS,
PROJECTS:
SCAFOM-RUX.DE

Sales Department

Rainer Krüger
Sales Manager Germany


+49 (0)2331 47 09-210
+49 (0)151 16 20 65 03
rainer.krueger@scafom-rux.de

Marina Calamonte
Sales


+49 (0)2331 47 09-253
marina.calamonte@scafom-rux.de

Udo Lülting
Sales


+49 (0)2331 47 09-230
udo.lueling@scafom-rux.de

Tim Tempelmann
Sales


+49 (0)2331 47 09-258
tim.tempelmann@scafom-rux.de

Lars Kretzschmar
Sales


+49 (0)2331 47 09-251
lars.kretzschmar@scafom-rux.de


Daniel Hesbacher
Sales


+49 (0)2331 47 09-255
daniel.hesbacher@scafom-rux.de

Sales Representatives

Andreas Hoffmann
PLZ: 0/98-99


+49 (0)351 33 602-65
+49 (0)151 16 20 41 08
andreas.hoffmann@scafom-rux.de

Jörn Winkler
PLZ: 2 (w/o 23923-23996)


+49 (0)441 68 26 82
+49 (0)151 16 20 65 04
joern.winkler@scafom-rux.de

Thomas Venn
PLZ: 3/48-49/57-59/586-589


+49 (0)2331 47 09-245
+49 (0)151 16 20 41 09
thomas.venn@scafom-rux.de

Frank Wiemann
PLZ: 50-56/580-585


+49 (0)2331 47 09-242
+49 (0)151 16 20 41 07
frank.wiemann@scafom-rux.de

Helmut Blauth
PLZ: 6/7/88-89


+49 (0)160 90 14 28 51
helmut.blauth@scafom-rux.de

Boris Hohl
PLZ: 40-47 Rheinland Süd


+49 (0)2331 47 09-243
+49 (0)151 14 77 39 20
boris.hohl@scafom-rux.de

Wulf D. Basse
PLZ: 1/23923-23996


+49 (0)30 515888-22
+49 (0)172 2121100
wulf.basse@scafom-rux.de

Mirko Langer
PLZ: 80-87/90-97


+49 (0)8664 32 50 42
+49 (0)151 14 77 39 22
mirko.langer@scafom-rux.de

René van Elten
PLZ: 40-47 Rheinland Nord


+49 (0)2331 47 09-244
+49 (0)151 14 77 39 23
rene.vanelten@scafom-rux.de

Stock Locations

Central Depot Hagen
Neue Str. 7
58135 Hagen
Tel +49 (0)2331 47 09-0
Fax +49 (0)2331 47 09-202
info@scafom-rux.de

Depot Berlin
Zobtener Straße 73
10317 Berlin-Lichtenberg
Tel +49 (0)30 51 58 88-22

Depot Hamburg
Kulemannstieg 5
22457 Hamburg
Tel +49 (0)40 54 80 57 48

Depot Leipzig
An der Bahn 11
04319 Leipzig-Engelsdorf
Tel +49 (0)341 251 38 05

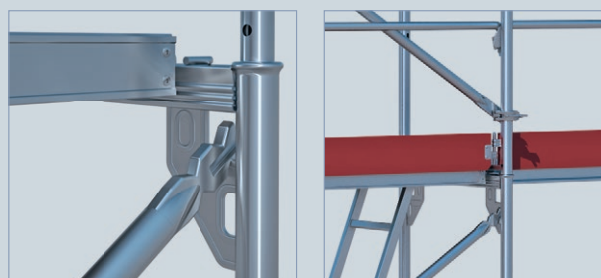
Depot München
Krautgartenstr. 36
85241 Hebertshausen
Tel +49 (0)175 50 76 708

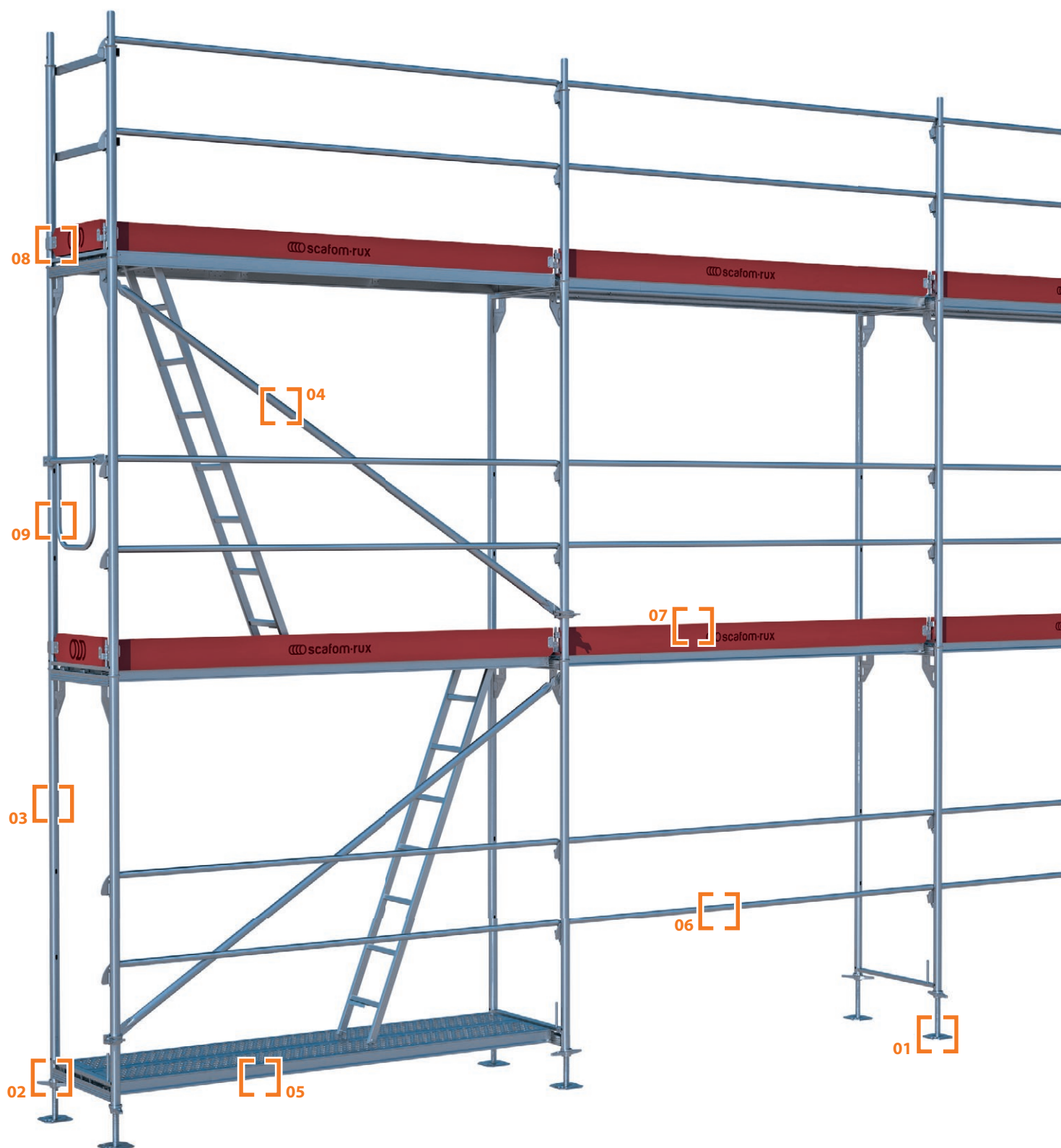
FRAMESCAFF - FAÇADE SCAFFOLDING**02** | CONTACT PERSONS**03** | CONTENTS**04-05** | TECHNICAL DETAILS – FRAMESCAFF**06-07** | COMPONENTS**08-09** | SYSTEM ADVANTAGES**10** | ASCENT SOLUTIONS**PRICE LIST****11-33** | PRODUCTS**11-12** | SCAFFOLD BASIS**13** | VERTICAL FRAMES**14-17** | DIAGONALS / SIDE PROTECTION**17** | TRANSOMS**18** | DECKS**18-19** | ACCESS HATCHES**20** | STAIRS**21** | BRACKETS**22** | SCAFFOLD FINAL SECTION**23-24** | ANCHORAGE**25-29** | ACCESSORIES AND LOGISTICS**30-33** | PERSONAL PROTECTION**34-35** | PRICE EXAMPLES**36-38** | ASSEMBLY**39** | APPROVAL / MIXING APPROVAL**40-41** | SCAFOM-RUX SERVICE | APP | ANIMATIONS**42-43** | PRODUCT OVERVIEW**44-45** | RENTAL**46** | GENERAL TERMS AND CONDITIONS**47** | ORDER FORM**GOOD TO KNOW****COMPATIBILITY IN 07 DIMENSION**

FRAMESCAFF was developed as an alternative and building-authority approved addition to the proprietary 07 façade scaffolding solution. The ever-increasing range of components and accessories allows it to be used as a completely autonomous scaffolding system with its own approval.

Frame width 0.73 m**Frame height** 2.00 m**Bay lengths** 1.57 m / 2.07 m / 2.57 m and 3.07 m**INGENIOUSLY SIMPLE**

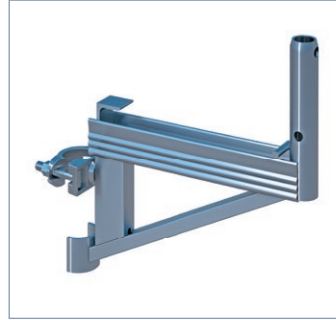
FRAMESCAFF is simple and can be assembled in a few easy steps. Thanks to its specific geometry, the scaffold is self-aligning after being initially levelled with the ground.





A SCAFFOLD WITH FEW COMPONENT PARTS? **ROCK SOLID!**

Convincing simplicity – that is the way the façade scaffolding FRAMESCAFF can best be described. Very few individual components, simple assembly of the decks and toe boards as well as the well-considered affixing of the guardrails and diagonals ensure a safe and stable scaffolding structure.



FRAMESCAFF THE 07 DIMENSION FAÇADE SOLUTION



TOP - AS INDIVIDUAL PLAYER AND TEAM PLAYER

A standard width of 73 cm and a bay length in the 07 dimension makes FRAMESCAFF not only useful as a stand-alone solution, but also means that it is compatible with generally accepted market standards – mixing in accordance with the approval is also an option.

ASSEMBLY? QUICK AND SIMPLE! **SIMPLY STRUCTURED, EFFICIENTLY ASSEMBLED!**

- | | | |
|---------------------------|--------------------------|---------------------------|
| 01 Base jack | 04 Diagonal | 07 Toe board |
| 02 Starter transom | 05 Steel deck | 08 End toe board |
| 03 Vertical frame | 06 Back guardrail | 09 Front guardrail |

FRAMESCAFF - SIMPLE, SAFE AND GOOD!

PRACTICAL DETAILS FOR PRACTICAL APPLICATIONS



Comprehensive experience in the development of practically-oriented scaffolding systems is the basis of our work – additionally, there is the permanent exchange with our professional users.

The modern façade scaffolding FRAMESCAFF is the logical consequence out of requirements and optimisation. Innumerable practical details make the system fit for daily use and to an all-rounded that can cope with any assignment and situation – even those that may be somewhat unimaginable.

LOAD UP TO 3.0 KN/M²

FLEXIBLE MODULAR SYSTEM

SIMPLE HANDLING

LOW WEIGHT

OPTIMUM SAFETY

ONLY 4 EXAMPLE PARTS THAT MAKE FRAMESCAFF SIMPLY GOOD



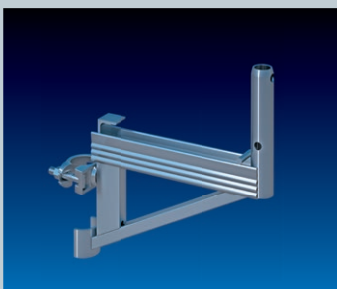
STEEL DECKS U-SHAPED HOOK-UP

- Anti-slip design
- Available in the usual lengths:
1.57 m / 2.07 m and 2.57 m



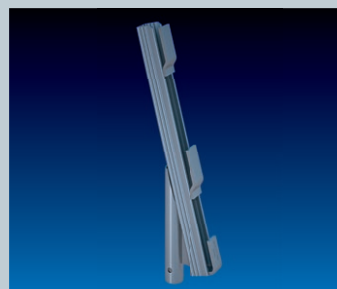
FRONT GUARDRAIL, DOUBLE

- Even endures against climbing "misuse"
- Saves assembly time



BRACKET WITH SUPPORT

- Can be fitted at any height thanks to coupler
- Available as single or 2-deck version



PROTECTIVE ROOF EXTENSION ARM

- For safe roof work
- Covered with decks out of wood, steel or aluminium

YOU ARE LOOKING FOR ALTERNATIVES?

WITH FRAMESCAFF YOU HAVE FOUND THEM

FRAMESCAFF is compatible with other, conventional façade scaffolding systems on the market with its standard width of 0.73 m and available lengths of 1.57 m / 2.07 m / 2.57 m and 3.07 m.

For you it means: an economic alternative that might make all the difference when in competition for the next project.

PRACTICAL ASSEMBLY

Assembly is carried out almost entirely without any need for tools and is in no way impaired by any loose parts. After aligning the base of the scaffolding, the next steps for a standard erection can only follow one prescribed method. The scaffolding automatically stands in a proper perpendicular alignment.

LOW WEIGHT

FRAMESCAFF is among the lightest façade systems. This is a great advantage not only during assembly and disassembly, but also in terms of transportation and storage.

STANDARDISED

The façade scaffolding FRAMESCAFF is based on the familiar "07-length" dimension (1.57 m – 2.07 m – 2.57 m and 3.07 m). The standard height of the frames is 2.00 m or 1.00 m. Guardrails are available in lengths of 3.07 m. Additionally, scafo-m-rux offers a comprehensive range of other component parts that can be readily combined with one another.

U-SHAPED HOOK-UP

The decks are positioned in the U-profile transoms and then affixed there by the frames that are inserted from above.



HIGH RIGIDITY

The high rigidity of the façade system reduces to a minimum the number of anchorage points needed.

UNLIMITED POSSIBILITIES

The low number of basic parts required is compensated by a number of intelligent and practical accessories. This means that FRAMESCAFF can be deployed very flexibly in any field of application.

LOGISTICS BENEFIT

The benefit of FRAMESCAFF makes itself noticeable in terms of storage and transportation: low weight, optimal stackability of the material and reduction of manual work.

SMART DETAIL: LOGISTICS



90 % of the performance of scaffolders can be attributed to the transport and storage of the material. scafom-rux develops all its systems with a view to making this aspect even more economic.

- Optimum utilisation of the transport capacity
- Optimal storage
- Low weight
- Simple, safe handling
- Optimised product ergonomics

SIMPLY CHANGE THE LEVEL

NO PROBLEM AT ALL WITH THE
ALUMINIUM PLATFORM STAIRWAY!

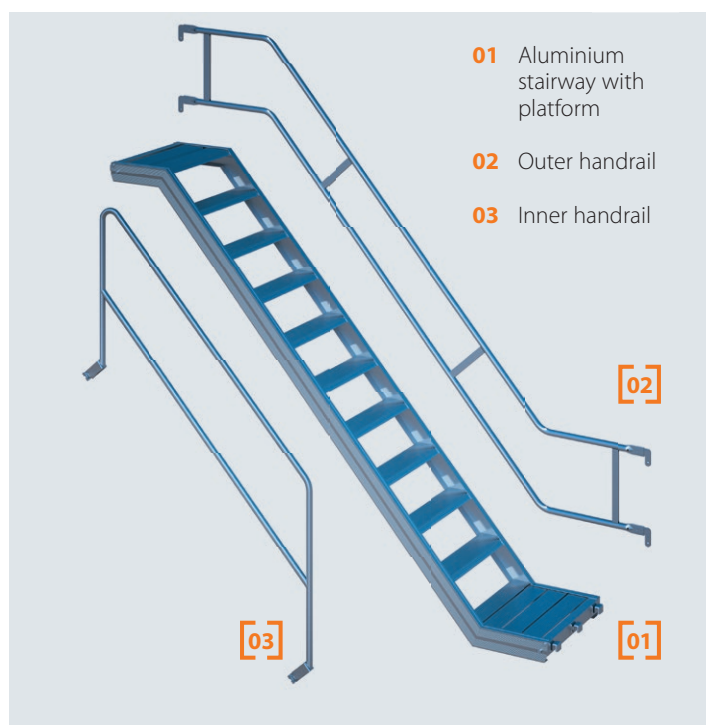
Changing levels in a scaffolding is challenging enough even without any load – the air astonishingly gets very thin very quickly. And with tools or building materials in the hand, it can become a balancing act when ladder frames are used. Solution: stairs! The aluminium platform stairway in the U-shaped hook-up version can be perfectly integrated into the FRAMESCAFF façade scaffolding.

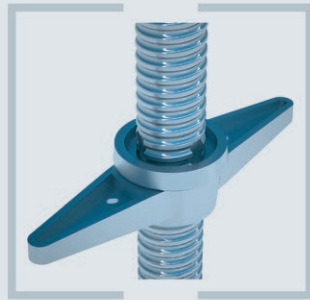
FULL SYSTEM INTEGRATION

USEFUL ACCESSORIES

SAFE ASCENT SOLUTION

MATERIAL, WORK AND
TIME SAVINGS





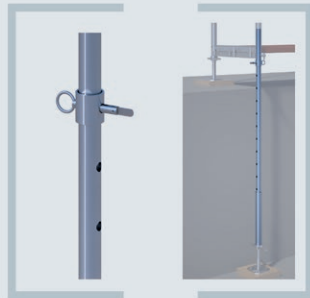
The notched thread on the spindle prevents any overtightening or loss of the wing nut.

Base jack Ø 38 mm

To compensate for uneven surfaces and to enable perpendicular/horizontal scaffold assembly. Depending on the position of the wing nut, the load-bearing capacity can be as much as 50 kN. High-speed thread for continuous adjustment. Comes with wing nut for simple height adjustment even under load conditions. The thread is notched 150 mm below its upper edge to secure the wing nut. Please ensure when fitting that the overlap length between the standard and the spindle is 25 % of the spindle length and is at least 150 mm.

H/L x B (m)	kg	Pack	Part No.	for order volume of: €/each		
0.30	2.40	330	00357	1: 11.90	50: 8.20	250: 7.40
0.50	3.20	250	00358	1: 13.80	50: 8.90	250: 8.20
0.60	3.90	300	08358	1: 14.30	50: 9.00	250: 8.50
0.78	4.20	250	00360	1: 18.30	50: 11.80	200: 10.80
1.00	4.70	200	00365	1: 22.90	50: 14.50	200: 12.90

SNP



Spacer tube complete with sleeve and pin

Suitable when the base jack is no longer adequate for compensating for very uneven surfaces or in the case of cellar stairways etc. It is used as an extension for the base jack in combination with the decking transom. Significant adjustment range of 1.00 m at 10 cm intervals.

H/L x B (m)	kg	Pack	Part No.	for order volume of: €/each		
1.80	6.40	50	00668	1: 42.90	10: 30.90	20: 27.60

SNP

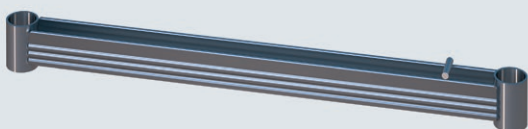


Underlay pad for base jack

Fitted with reflectors, out of plastic material.
H: 0.265 mm x L: 0.235 mm x W: 0.01 mm

Info	kg	Pack	Part No.	for order volume of: €/each		
	0.20	80	05632	1: 3.40	10: 2.45	50: 2.10

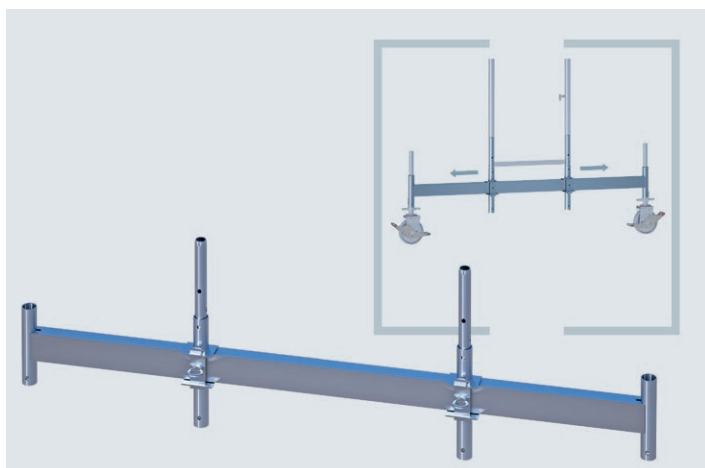
SNP



Base transom

Steel, hot dip galvanized. For fitting 2 planks.

Info	H/L x B (m)	kg	Pack	Part No.	€/each
	0.73	3.10	1	E04FS0063	26.40

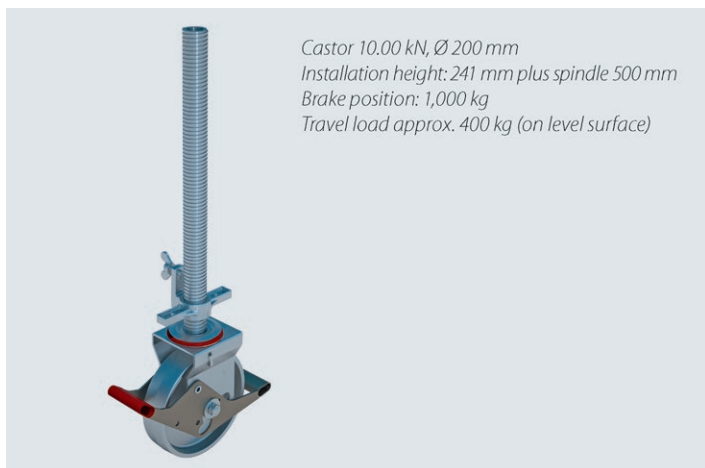


Universal mobile beam

Makes a mobile working scaffold out of almost every façade or modular scaffolding. Popular element in every scaffolders portfolio. No additional investments in a mobile scaffold system necessary. Can be used universally thanks to adjustable tube connectors. Possible to combine with all RUX castors

H/L x B (m)	kg	Pack	Part No.	for order volume of: €/each		
2.00	23.20	1	05505	1: 191.00	4: 159.00	8: 148.00

SNP

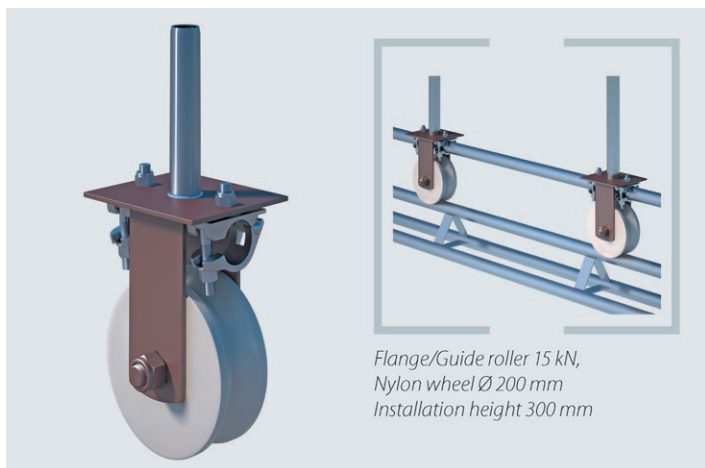


Castor 10.0 kN

For mobile scaffold structures of all types. Height adjustable for perpendicular alignment. Locking brake for a secure stand and to protect against any unintentional rolling away. Centric transfer of load when brake is engaged. Little effort needed when moving the system thanks to integrated slide bearings and nylon wheel to safeguard the supporting surface. Also equipped with a foot lever for releasing the brake. Suitable for both indoor and outdoor applications: EN 1004.

H/L x B (m)	kg	Pack	Part No.	for order volume of: €/each		
6.00	72	05507	1: 82.00	8: 58.00	24: 47.50	

SNP

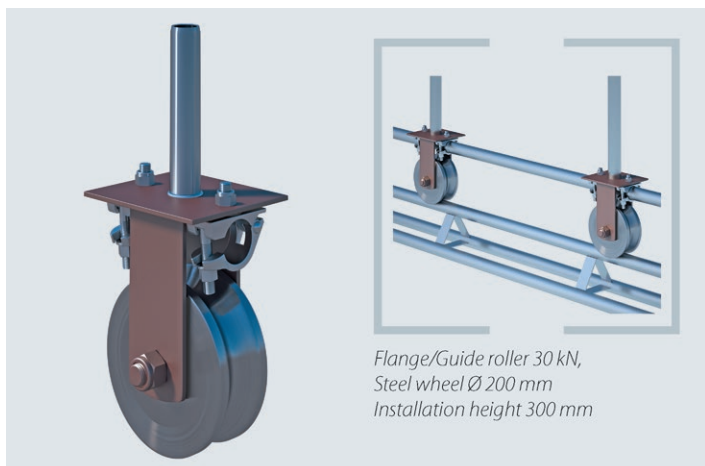


Flange/Guide roller (plastic)

For special mobile scaffolding structures. Plastic roller with concave design for guided transport on rails out of scaffolding material e.g. triangular supports. Comes with two integrated semi-couplers on the roller housing for secure attachment to the scaffolding structure. 15 kN permissible load, 200 mm roller diameter

H/L x B (m)	kg	Pack	Part No.	for order volume of: €/each		
12.80	50	04676_19	1: 260.00	4: 222.00	12: 198.00	

SNP

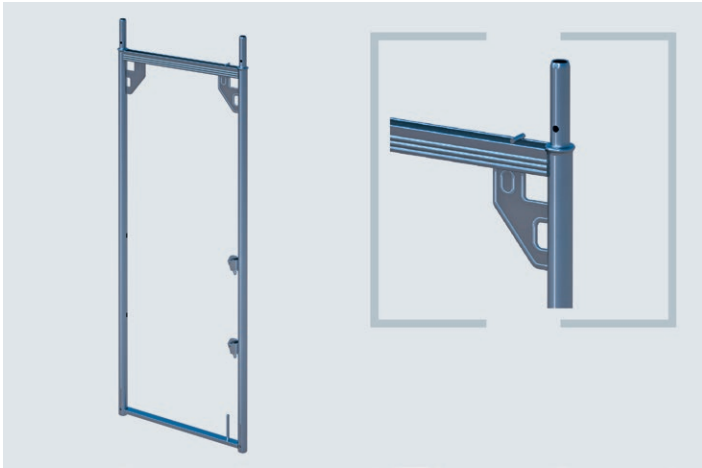


Flange/Guide roller (metal)

For special mobile scaffolding structures. Metal roller with concave design for guided transport on rails out of scaffolding material e.g. triangular supports. Comes with two integrated semi-couplers on the roller housing for secure attachment to the scaffolding structure. 30 kN permissible load, 200 mm roller diameter

H/L x B (m)	kg	Pack	Part No.	for order volume of: €/each		
25.40	50	04688_19	1: 395.00	4: 315.00	12: 295.00	

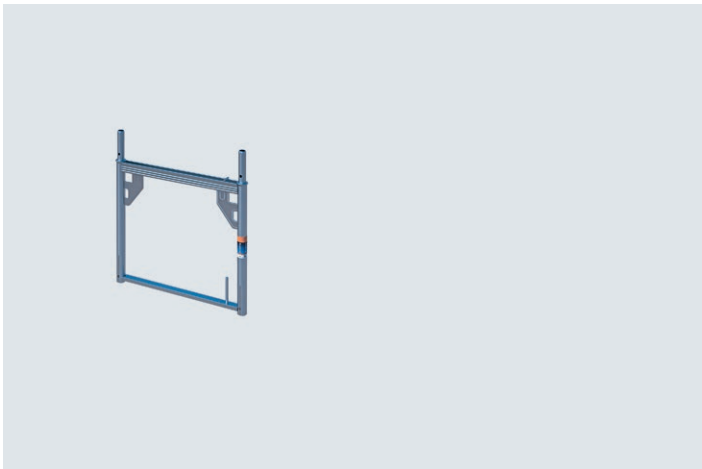
SNP



Vertical steel frame FRAMESCAFF

Upper transom with U-shaped profile for attachment of the scaffold decking; guardrail wedge housing for fitting the back guardrails. The upper gusset plates are designed for attachment of diagonals. Compatible with many conventional scaffolding systems. Thanks to its mixing approval, it is a suitable alternative for supplementing or extending your scaffold portfolio.

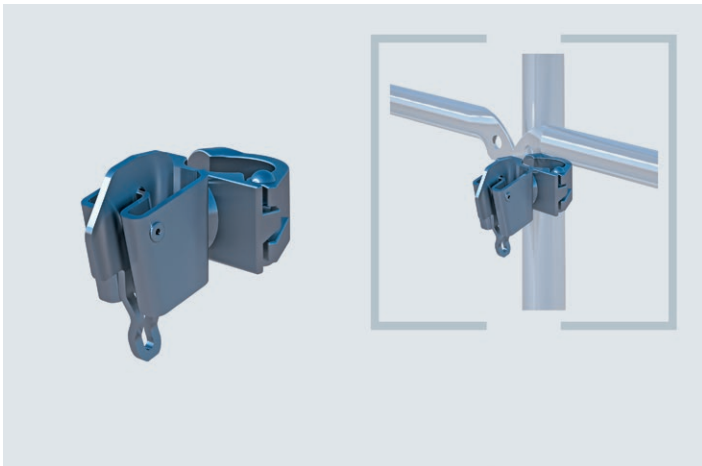
Info	H/L x B (m)	kg	Pack	Part No.	€/each
Width 06	1.00 x 0.73	12.80	20	E04FS0003	59.80
Width 06	1.50 x 0.73	16.00	20	E04FS0002	62.10
Width 06	2.00 x 0.73	18.60	20	E04FS0001	63.10



FRAMESCAFF vertical steel frame without guardrail housing

Upper transom with U-shaped profile for attachment of the scaffold decking. However, without any pre-fitted guardrail housing.

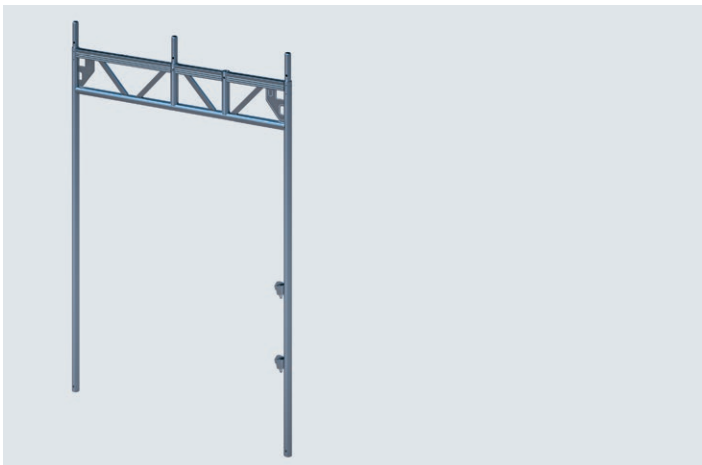
Info	H/L x B (m)	kg	Pack	Part No.	€/each
Width 06	0.66 x 0.73	10.20	20	E04FS0005	53.50



Guardrail coupler

Special coupler for the fitting of FRAMESCAFF back guardrails at any position.

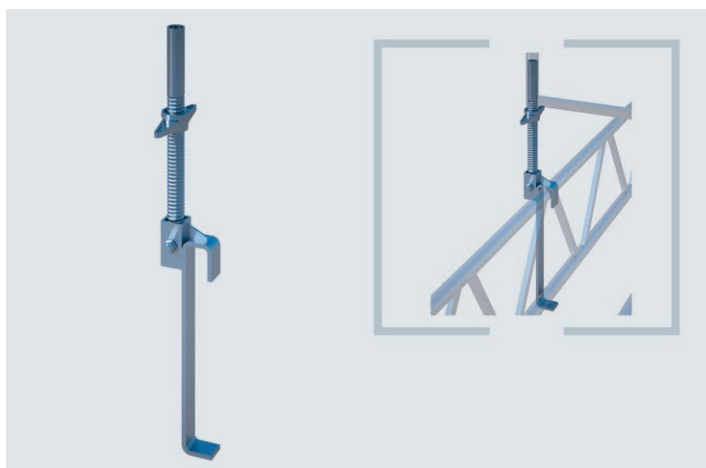
Info	H/L x B (m)	kg	Pack	Part No.	€/each
AF 19		1.20	800	E04FS0059	13.00
AF 22		1.20	800	E04FS0060	13.00



Passage frame

Comes with tube connector. Enables safe and smooth-flowing public traffic below the scaffolding and ensures more or less unrestricted access to the entrances of buildings or businesses and free views of the shop windows. Generous dimension of approx. 1.65 m (= 5 deck widths) to accommodate high numbers of pedestrians. Includes an integrated passage frame standard with guardrail housing on one side

Info	H/L x B (m)	kg	Pack	Part No.	€/each
	2.20 x 1.50	35.30	10	E04FS0006	169.00

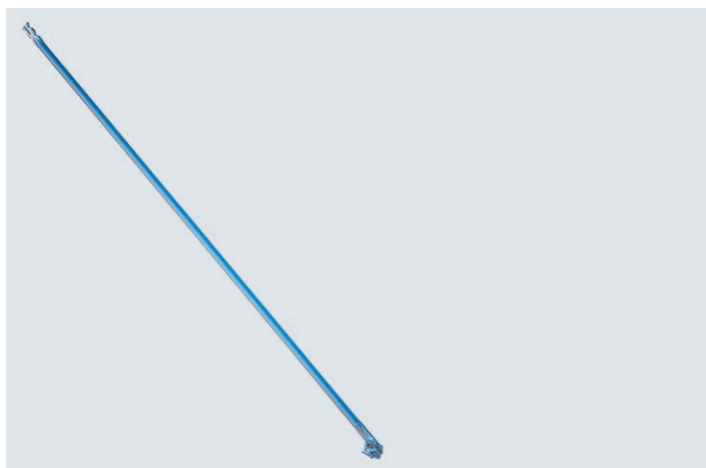


Adapter for vertical frames on lattice girder bridges

For the safe and rapid assembly of vertical frames or modular standards on lattice girders. Suitable for all conventional scaffolding systems and lattice girders with an installation height of 0.45 m. Self-securing structure with threaded spindle for height adjustment. Diameter of the spindle: 38 mm; length of the spindle: 500 mm.

H/L x B (m)	kg	Pack	Part No.	for order volume of: €/each		
5.90	1	00638	1:	37.50	4:	26.50 12: 24.50

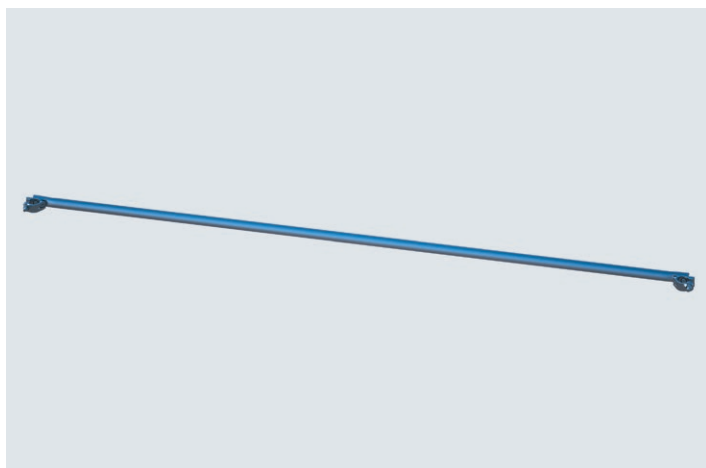
SNP



Diagonal with wedge head

Affixed to the gusset plate of the vertical frame on the one side and by a swivel wedge coupler to the perpendicular, vertical standard. Diagonal attachment also possible for non-perpendicular assembly. Can also be used in FRAMESCAFF-compatible scaffolding systems.

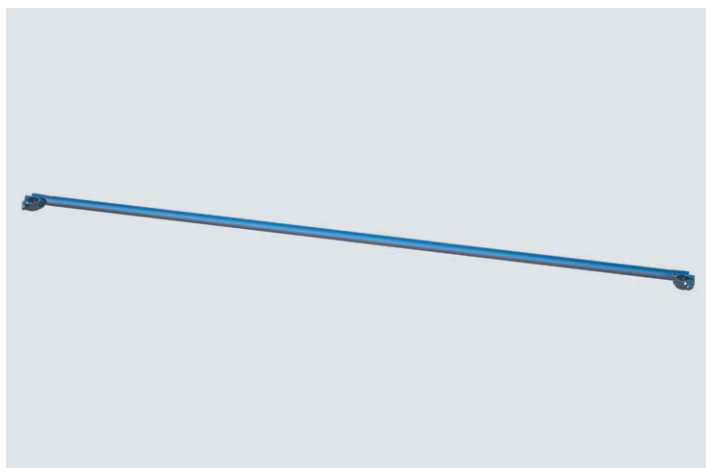
Info	H/L x B (m)	kg	Pack	Part No.	€/each	
	2.07 x 2.00	7.00	50	07143	28.90	①
	2.57 x 2.00	7.50	50	07144	30.30	①
	3.07 x 2.00	8.30	50	07145	32.40	①



Diagonal with screw coupler

Affixed to the frame's gusset plate and by a screw coupler to the vertical standard.

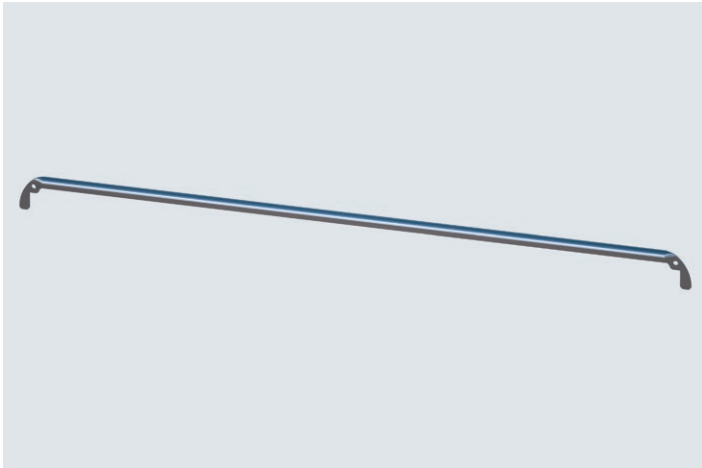
Info	H/L x B (m)	kg	Pack	Part No.	€/each
AF 19	2.07 x 2.00	7.00	50	E04FS0035	28.90
AF 22	2.07 x 2.00	7.00	50	E04FS0036	28.90
AF 19	2.57 x 2.00	10.00	50	E04FS0037	30.30
AF 22	2.57 x 2.00	10.00	50	E04FS0038	30.30
AF 19	3.07 x 2.00	12.00	50	E04FS0039	32.40
AF 22	3.07 x 2.00	12.00	50	E04FS0040	32.40



Horizontal diagonal

For the horizontal, rectangular alignment of scaffold bays in the FRAMESCAFF system.

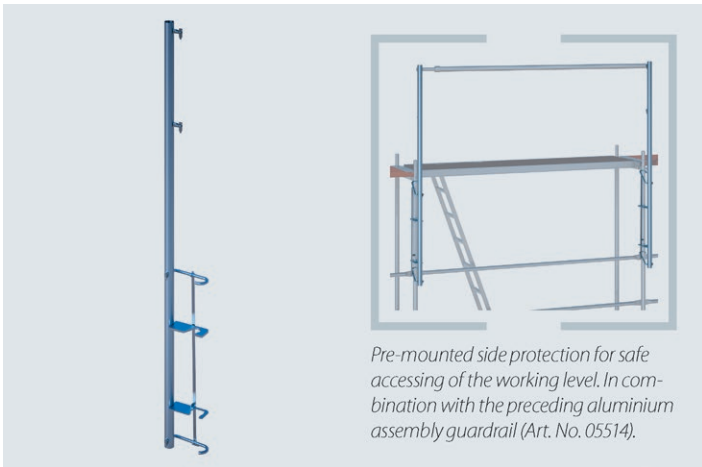
Info	H/L x B (m)	kg	Pack	Part No.	€/each	
AF 19	2.07	5.30	50	E04FS0041	47.90	①
AF 22	2.07	5.30	50	E04FS0042	47.90	①
AF 19	2.57	6.30	50	E04FS0043	53.10	①
AF 22	2.57	6.30	50	E04FS0044	53.10	①
AF 19	3.07	7.40	50	E04FS0045	62.10	①
AF 22	3.07	7.40	50	E04FS0046	62.10	①



Back guardrail

For the DIN-conform threefold side protection. For insertion in the guardrail housing at the stipulated knee and hip heights. Suitable for FRAMESCAFF vertical frames and compatible products.

Info	H/L x B (m)	kg	Pack	Part No.	€/each
	0.73	1.70	100	E04FS0007	12.30
	1.09	2.40	100	E04FS0008	13.00
	1.57	3.30	100	E04FS0009	14.20
	2.07	4.20	100	E04FS0010	15.30
	2.57	5.10	100	E04FS0011	16.40
	3.07	6.10	100	E04FS0012	17.50



Assembly guardrail post

For the safety of your scaffold erectors. Assembly aid when building-up the scaffolding for the attachment of fall protection at the respective uppermost level of the scaffolding without having to enter this area. Attachment is screw-free and fitting simple, without any interruption to the assembly rhythm. 2 pieces are required at all times.

Info	H/L x B (m)	kg	Pack	Part No.	€/each
	2.20	7.60		05510	85.50



Assembly guardrail, telescopic

Used together with the assembly guardrail post. Adjustment range from 2.05 m to 3.75 m. Irrespective of how quickly you assemble the scaffolding, your safety is always there before you.

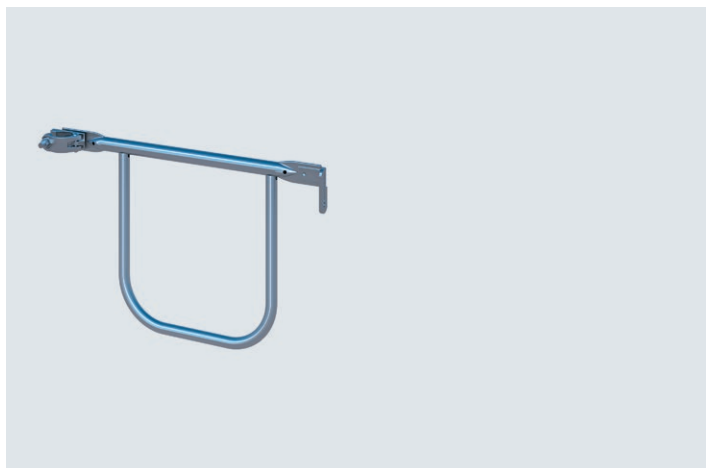
Info	H/L x B (m)	kg	Pack	Part No.	€/each
	3.40	3.30		05514	179.50



Front guardrail, single

For the fitting of the front-end, three-piece side protection. Attachment using semi-coupler and guardrail housing.

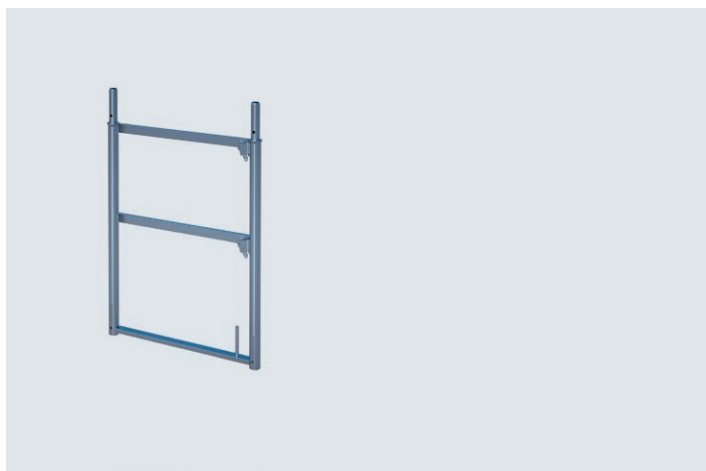
Info	H/L x B (m)	kg	Pack	Part No.	€/each
AF 19	0.73	2.40	50	E04FS0020	17.90
AF 22	0.73	2.40	50	E04FS0021	17.90



Front guardrail, double

For the fitting of the front-end, three-piece side protection in a single operation. Attachment using a semi-coupler on the one side and mounted on the guardrail housing on the other side.

Info	H/L x B (m)	kg	Pack	Part No.	€/each
AF 19	0.73	4.00	50	E04FS0022	27.50
AF 22	0.73	4.00	50	E04FS0023	27.50



Front guardrail frame

Front-end final section of the uppermost level of a FRAMESCAFF façade scaffolding. Double side protection and deck retainer in one! Comes with guardrail housing for the attachment of back guardrails.

Info	H/L x B (m)	kg	Pack	Part No.	€/each
	1.00 x 0.73	12.50	25	E04FS0027	63.00

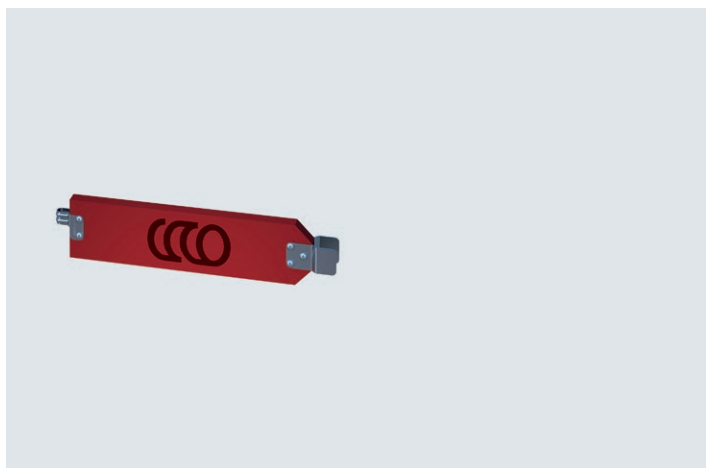


Toe board for U-shaped hook-up

Impregnated wood. Completes the three-piece side protection. A real safety product that prevents objects such as tools or building materials from falling down. Comes with galvanised fittings for insertion between the FRAMESCAFF vertical frames. The height of 150 mm corresponds to the European standard. We would be pleased to provide you with an offer for printed and/or coated toe boards.

Info	H/L x B (m)	kg	Pack	Part No.	€/each
	0.73	2.00	100	E04FS0028	11.50
	1.09	2.90	100	E04FS0029	12.70
	1.57	4.10	100	E04FS0030	13.70
	2.07	5.40	100	E04FS0031	14.70
	2.57	6.60	100	E04FS0032	15.80
	3.07	7.90	100	E04FS0033	17.20

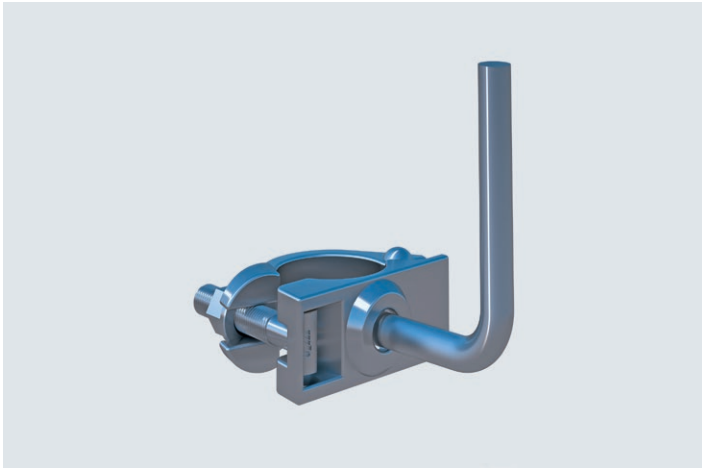
Embossing possible



Front toe board for U-shaped hook-up

Impregnated wood. Completes the three-piece side protection. A real safety product that prevents objects such as tools or building materials from falling down. Comes with galvanised fittings for insertion between the FRAMESCAFF vertical frames. The height of 150 mm corresponds to the European standard.

Info	H/L x B (m)	kg	Pack	Part No.	€/each
	0.73	1.90	100	E04FS0034	10.30



Half coupler with toe board connecting piece

Steel, hot dip galvanized. For toe board connection, e.g. on inside corners. Please specify the width across the flat when placing your order!

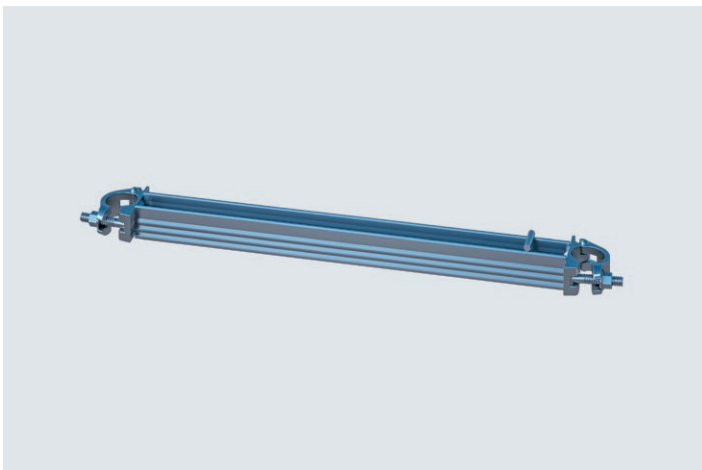
Info	H/L x B (m)	kg	Pack	Part No.	€/each	
AF 19		1.00		E04FS0071	13.30	①
AF 22		1.00		E04FS0072	13.30	①



Starter transom for U-shaped hook-up

For the lowest level at the foot of the scaffolding. It is slid over the base jacks and thereby aligns them precisely to the width of the scaffolding, similar to an assembly aid. Comes with U-shaped hook-up for two decks and for the lower-most attachment of the aluminium platform stairway.

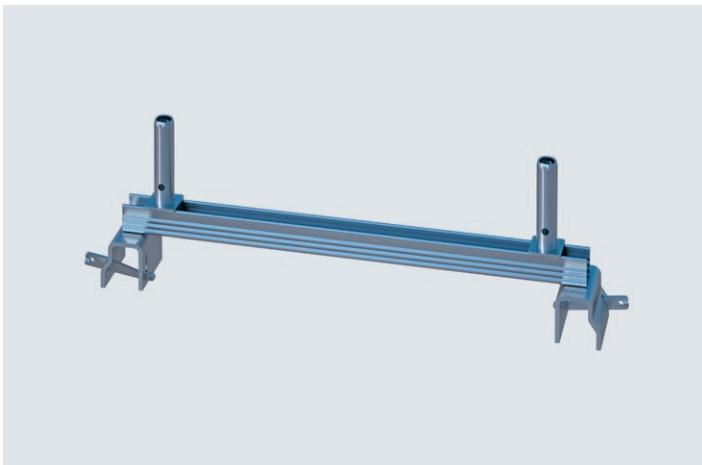
Info	H/L x B (m)	kg	Pack	Part No.	€/each
	0.73	3.10	1	E04FS0063	26.40



Horizontal transom with U-shaped profile

For intermediate decking levels e.g. in the case of scaffold projections in a longitudinal direction. Continuous height adjustment possible thanks to the welded-on scaffold coupler. For the attachment of two decks at any intermediate level. Also suitable for bridging applications together with lattice girders.

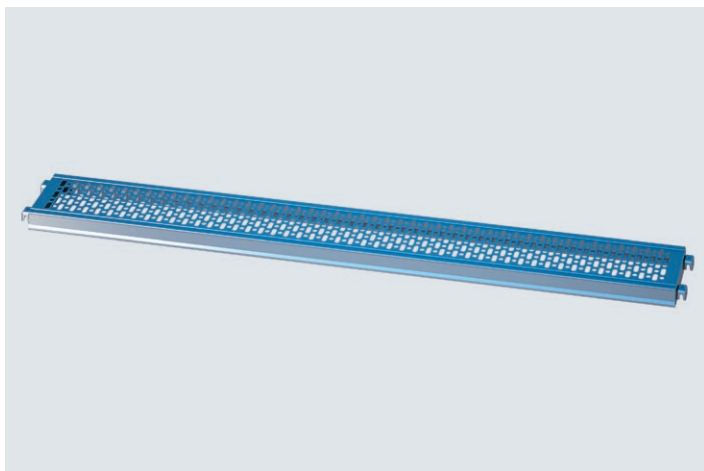
Info	H/L x B (m)	kg	Pack	Part No.	€/each
AF 19	0.73	4.00	1	E04FS0061	37.00
AF 22	0.73	4.00	1	E04FS0062	37.00



Support rail

Attached to lattice girders or tubes and decked with FRAMESCAFF planks. For fitting additional scaffolding in modular bay dimensions in the case of bridging applications. Allows stepless decked levels in birdcage scaffolds. Comes with connecting pieces for guardrail supports.

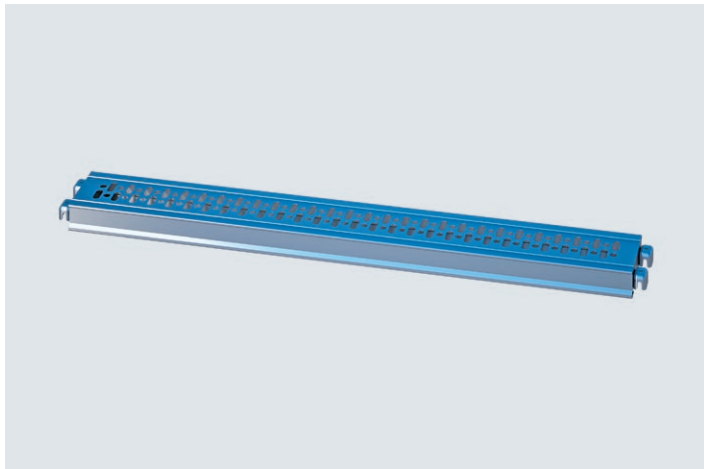
Info	H/L x B (m)	kg	Pack	Part No.	€/each	
	0.73	9.10	1	E04FS0070	54.90	①



Steel deck 0.32 m for U-shaped hook-up - LA 07 dimension

For FRAMESCAFF and compatible scaffolding systems. Optimal stackability. Integrated deck retainers to prevent lift. Can also be used in catch scaffolds and roof safety systems as per DIN 4420. Anti-slip and durable, perforated surface that only allows a minimum amount of building and blasting material to collect. At 3.07 m length suitable for scaffold group 4 = 3.00 kN/m²
 At 2.57 m length suitable for scaffold group 5 = 4.50 kN/m²

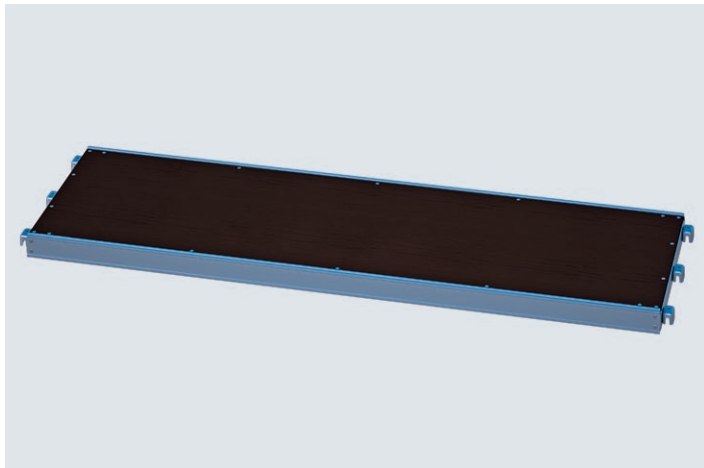
Info	H/L x B (m)	kg	Pack	Part No.	€/each
LC6	0.73 x 0.32	5.90	45/60	E04RS0941	45.80
LC6	1.09 x 0.32	9.70	45/60	E04RS0887	46.70
LC6	1.57 x 0.32	11.30	45/60	E04RS0942	48.00
LC6	2.07 x 0.32	15.60	45/60	E04RS0888	53.80
LC5	2.57 x 0.32	18.70	45/60	E04RS0943	62.20
LC4	3.07 x 0.32	21.50	45/60	E04RS0944	70.50



Compensation deck 0.19 m for U-shaped hook-up - LA 07 dimension

The ideal addition to the steel deck with tube hook-up when erecting large-sized scaffold platforms. As a filler element it allows the creation of gap-free working areas.

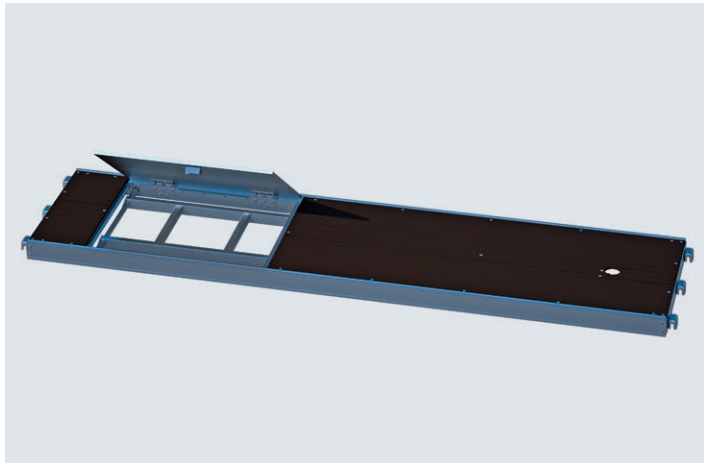
Info	H/L x B (m)	kg	Pack	Part No.	€/each
LC6	0.73 x 0.19	4.10	60	E04RS0608	33.50 ①
LC6	1.09 x 0.19	5.60	60	E04RS0609	39.80 ①
LC6	1.57 x 0.19	8.20	60	E04RS0611	41.00
LC6	2.07 x 0.19	10.20	60	E04RS0612	47.70
LC5	2.57 x 0.19	13.20	60	E04RS0613	55.80
LC4	3.07 x 0.19	15.30	60	E04RS0614	64.80 ①



Aluminium floor panel with plywood surface for U-shaped hook-up BFU 100-G

Waterproof, anti-slip surface. Robust head section with steel clamps. High load-bearing capacity with very little sag. Easy handling, transport and fitting.

Info	H/L x B (m)	kg	Pack	Part No.	€/each
LC3	2.57 x 0.61	20.00	10	E04RS0976	134.30 ①
LC3	3.07 x 0.61	23.00	10	E04RS0977	158.90 ①



Aluminium ladder frame with integrated ladder for U-shaped hook-up

Waterproof, anti-slip with plywood surface BFU 100-G. Robust head section with steel clamps. Extremely light and simple to fit, yet very solid. Includes safety latches for the access hatch.

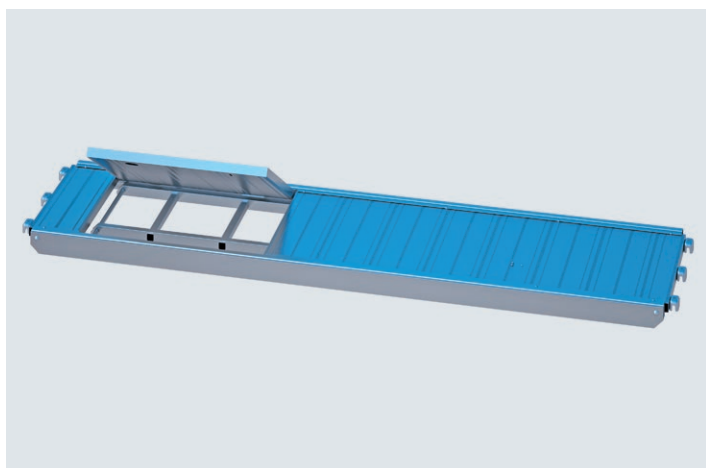
Load:

3 kN/m² at 2.50 m length

2 kN/m² at 3.00 m length

Info	H/L x B (m)	kg	Pack	Part No.	€/each
LA/LC3	2.57 x 0.61	21.00	10	E04RS0467	259.00
LA/LC3	3.07 x 0.61	24.50	10	E04RS0468	287.80

07 dimension



Aluminium ladder frame entirely out of aluminium with integrated ladder for U-shaped hook-up

Anti-slip aluminium surface. Robust head section with steel clamps. Includes safety latches for the hatch and ladder.

Load:

3 kN/m² at 2.50 m length

2 kN/m² at 3.00 m length

Info	H/L x B (m)	kg	Pack	Part No.	€/each
LC3	2.57 x 0.61	23.00	10	06090	309.00
LC3	3.07 x 0.61	27.00	10	06091	345.00

07 dimension



Aluminium platform stairway 0.64 m for U-shaped hook-up - LA 07 dimension

To enable regulation-conform scaffold access as per TRBS 2121. Anti-slip steps. Low weight thanks to aluminium design. Space-saving stackability for transport and storage.

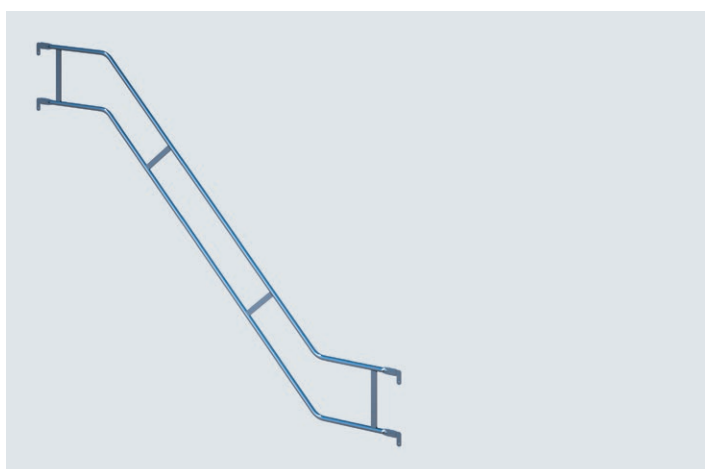
Bay length: 2.57 m

Bay height: 2.00 m

Load up to 2 kN/m²

Info	H/L x B (m)	kg	Pack	Part No.	€/each
	2.57 x 0.64	23.00	10	E04RS0589	365.00

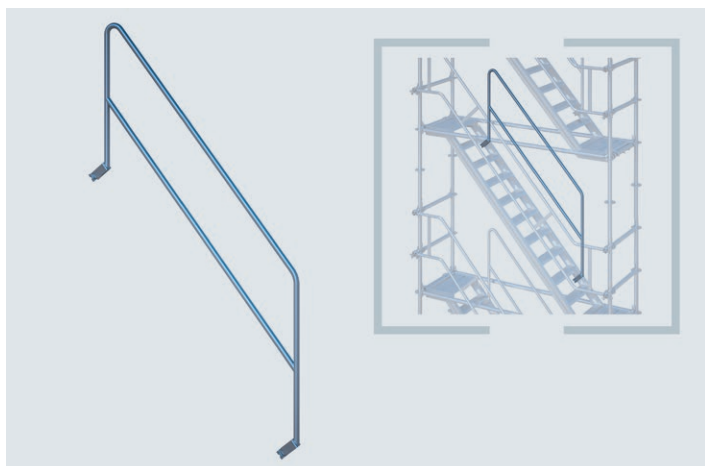
07 dimension



Outer handrail

Outer handrail for aluminium platform stairway, mounted by insertion in the guardrail housing on the vertical frame.

Info	H/L x B (m)	kg	Pack	Part No.	€/each
	2.00 x 2.57	15.90	20	E04FS0064	97.50

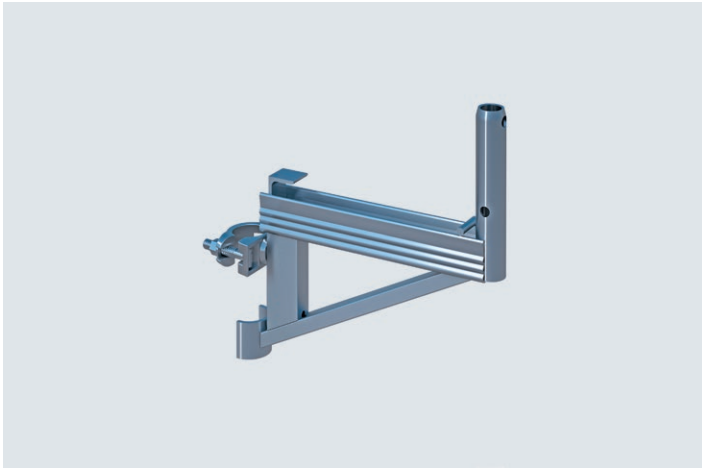


Inner stairway handrail

For aluminium platform stairway 0.64 m (H: 2.00 m x L: 2.57 m x W: 0.64 m) for tube hook-up (Art. No. E04RS0571) or for U-shaped hook-up (Art. No. E04RS0589).

Attached to the stairway support using the clamping bracket with screw connection.

Info	H/L x B (m)	kg	Pack	Part No.	€/each
LA	2.57 x 0.64	10.90	25	E04RS0573	89.00



Bracket 0.36 m with tube connector

Comes with welded-on semi-coupler incl. anti-lift retainers. To widen the scaffolding on both sides by a decking width at any position on the scaffold. Connecting pieces for guardrail posts to enable fitting of the three-piece side protection. Recommendable for any projections or recesses in the wall as well as for the uppermost scaffolding level in the case of roof overhangs, guttering etc.

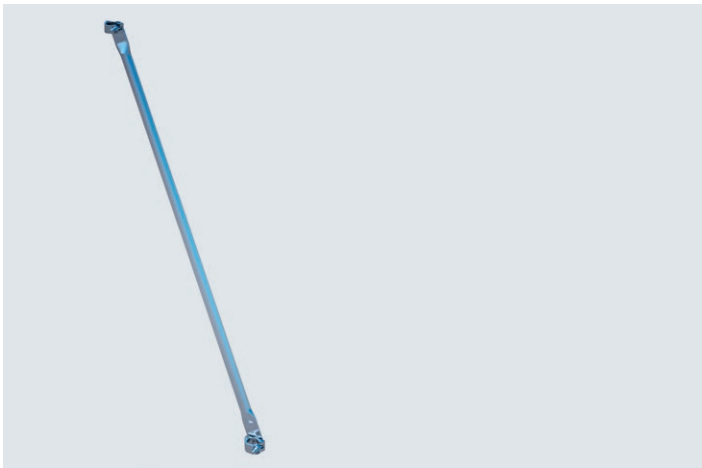
Info	H/L x B (m)	kg	Pack	Part No.	€/each
AF 19	0.36	3.80	100	E04FS0049	29.40
AF 22	0.36	3.80	100	E04FS0050	29.40



Bracket 0.73 m with tube connector

Comes with welded-on semi-coupler. To widen the scaffolding bay on both sides or for extending entire scaffolding levels by the double decking width. Suitable for larger niches and façade protrusions.

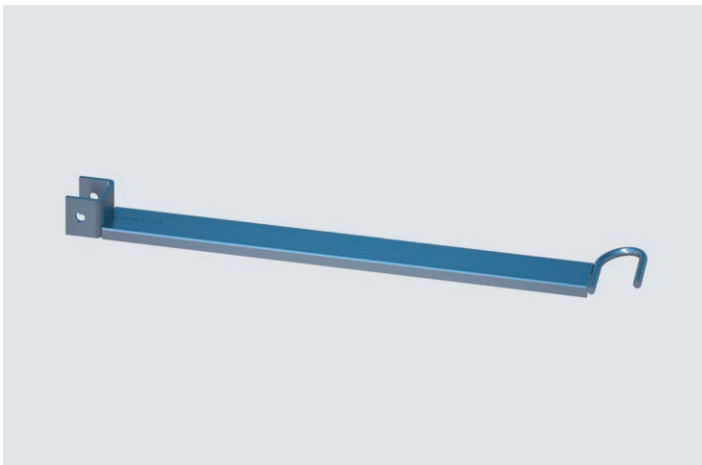
Info	H/L x B (m)	kg	Pack	Part No.	€/each
AF 19	0.73	6.60	100	E04FS0051	37.50
AF 22	0.73	6.60	100	E04FS0052	37.50



Support prop

To support the 0.73 m bracket. Stabilises the entire cantilever extension and diverts the vertical forces into the vertical frame. Enhances load-bearing capacity and the sense of security. Attachment by means of welded-on semi-couplers on both sides.

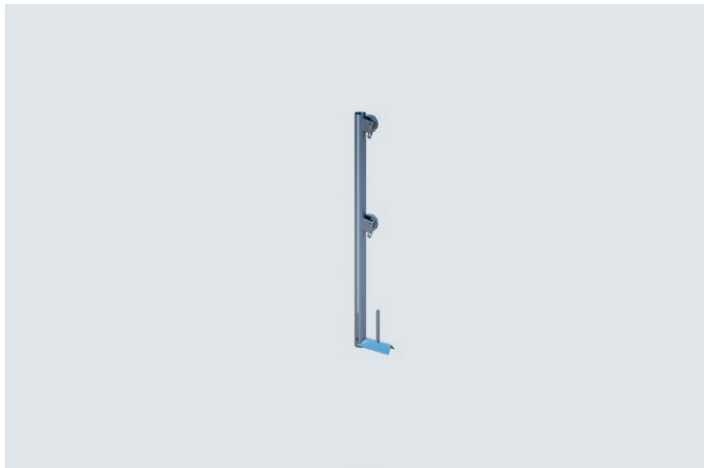
Info	H/L x B (m)	kg	Pack	Part No.	€/each
AF 19	1.77 x 0.73	4.80	25	E04FS0047	36.90 ①
AF 22	1.77 x 0.73	4.80	25	E04FS0048	36.90 ①



Deck retainer for bracket

Retainer for bracket decking. Comes with drill holes for affixing with locking pins (additional component Art. No. 07134).

Info	H/L x B (m)	kg	Pack	Part No.	€/each
	0.36	0.90	50	E04FS0055	11.50 ①
	0.73	1.50	50	E04FS0056	13.90 ①



Guardrail post, basic

For creating the three-piece, all-round side protection in the uppermost scaffold level. Comes with guardrail housing for attachment of the back guardrails. The welded-on flat bar serves as a deck retainer and for attachment of the deck holders. Equipped with clamping screw.

Info	H/L x B (m)	kg	Pack	Part No.	€/each
	1.00	4.60	50	E04FS0026	25.50



Guiderail post

Identical function to the guardrail post (basic) but with an integrated transom for securing the decks.

Info	H/L x B (m)	kg	Pack	Part No.	€/each
	1.00 x 0.73	7.90	50	E04FS0025	36.20



Guardrail post for safety net

For use as a roof safety system for roofers. Can be used as a deck retainer, for attachment of the three-piece side protection and for the fitting of protective nets. Tool-free assembly thanks to clamping screw with eyelet.

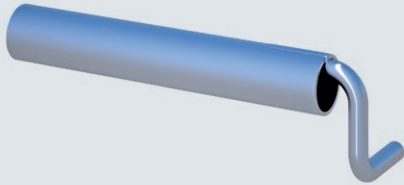
Info	H/L x B (m)	kg	Pack	Part No.	€/each
	2.00 x 0.73	13.20	50	E04FS0057	77.50



Protective roof extension arm

Secures passers-by and staff against falling objects. Particularly important for building sites in inner-city areas. To be used together with brackets and support props, incl. deck retainers. Application with 2 steel decks 0.32 m or alternatively with one floor panel 0.61 m.

Info	H/L x B (m)	kg	Pack	Part No.	€/each
		4.20		E04FS0058	27.00



Steel shore tube

New: comes with inner anchor hook. Wall plugs, eyelets, steel shore tube and standard couplers form the unit that ensures tight and pressure-resistant anchorage of the scaffolding to the building structure.

H/L x B (m)	kg	Pack	Part No.	for order volume of: €/each		
0.30	1.40	500	00367	1: 7.80	50: 4.90	100: 4.60
0.40	1.80	500	00368	1: 8.50	50: 5.20	100: 4.90
0.60	2.50	400	00369	1: 10.10	50: 7.80	100: 6.90
1.00	4.00	200	00370	1: 12.80	50: 8.90	100: 8.50
1.40	5.40	150	00372	1: 15.10	50: 13.60	100: 11.30

SNP

NEW

Permanent anchors with VA stainless steel (M16)

Special scaffold anchors made out of stainless steel that remain permanently on the façade. Allows the attachment of façade elements or insulation materials with a thickness of up to 25 cm.

H/L x B (m)	kg	Pack	Part No.	for order volume of: €/each		
0.13 x 0.18	0.65	25	07060	1: 17.95	20: 14.20	50: 13.50

SNP



Incl. ring screws (Art. No. 07061)
Matching component part:
PU plug (Art. No. 07062)

SMART DETAILS



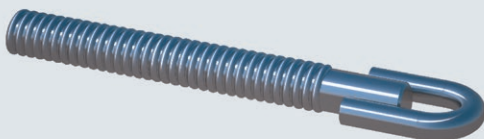
Stainless steel – The VA stainless anchor remains permanently in the façade and – unlike most solutions offered – features minimal thermal conductivity.



Variable – Thanks to the length-adjustable ring bolt (threaded), the anchor can take-up insulation material thicknesses of 15 to 25 cm.



PU plugs – By insulating and sealing the anchorage point, the façade's thermal bridge is interrupted.



Ring bolt M16

Galvanised, suitable for VA permanent anchor M16. Useful length: 130 mm.

H/L x B (m)	kg	Pack	Part No.	for order volume of: €/each		
0.17	0.30	25	07061	1: 3.90	20: 3.50	50: 2.95

SNP

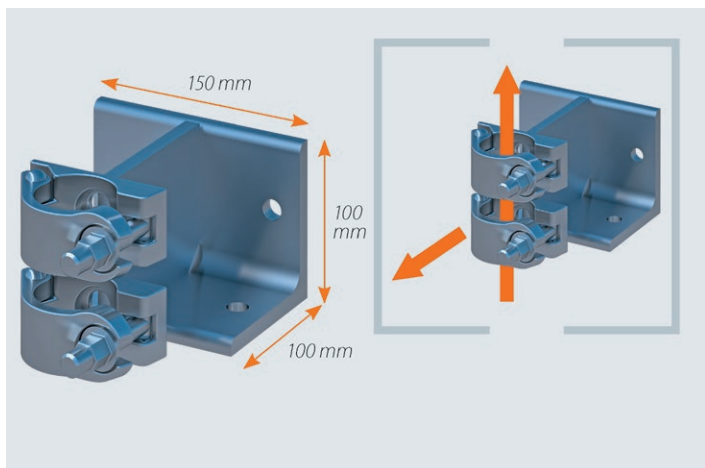


PU plugs

Suitable for VA permanent anchor M16. Weight per packaging unit. PU soft foam for drill hole diameter up to 17 mm, thickness 30 mm / width 40 mm.

H/L x B (m)	kg	Pack	Part No.	for order volume of: €/each					
0.03	0.12	25	07062	1:	1.40	20:	1.25	50:	1.15

SNP



Wall/Ceiling coupler

Universal element for the attachment of scaffolding structures to ceilings or walls. High load-bearing values thanks to double coupler design. Highly efficient when assembling ceiling or wall scaffolding in cases where the area below the scaffold has to remain entirely free. Tightening torque of the collar nuts 50 Nm. Corresponds to EN 74.

Max. slip load +/- 9.09 kN

Resultant anchor load at max. utilisation:

D = Z = 16.00 kN, V = 6.5 kN in reinforced concrete

Max. head tear-off load +/- 17 kN

Resultant anchor load: 8.5 kN

Info	kg	Pack	Part No.	for order volume of: €/each		
AF 19	4.40	20	07212	1: 26.30	10: 21.00	25: 18.50
AF 22	4.40	20	07214	1: 26.30	10: 21.00	25: 18.50

SNP

SMART DETAILS



Wall mobile – Thanks to the diverse connection options, tubes and girders can be securely affixed to walls and ceilings both vertically as well as horizontally.



Tear-off load – The maximum head tear-off load of the wall/ceiling coupler is 17 kN.



Slip load – Add-on components are secured against slip up to a max. of 9.10 kN.



SMART CLIP

**Duralok mesh box, complete**

Duralok stacking rack incl. base panel and side mesh sections. Comes with 4 crane lugs.

Info	H/L x B (m)	kg	Pack	Part No.	€/each
	1.25 x 0.85	109.40	1	E08SR0033	319.00 ①

Duralok stacking rack, collapsible

Simple principle – numerous uses. Space-saving when not in use as it is collapsible. Consists of a base frame and four insertion tubes (diameter 48.3 mm). The insertion tubes can be substituted by longer ones when need be. Designed for fork-lift loading and crane transport. Stackable thanks to the large circular feet that also prevent any sinking into soft ground and protect the contact surface. Payload 1,500 kg; with 4 crane lugs.

Rollers 10 kN (Art. No. 05507) can be used to make the rack manoeuvrable. Duralok side sections (Art. No. E08SR0035) for small parts available as an option.

H/L x B (m)	kg	Pack	Part No.	for order volume of: €/each		
1.25 x 0.85	45.60	20	E08SR0032	1: 210.00	10: 130.00	50: 119.00

SNP

Matching component parts:
Side mesh section (Art. No. E08SR0035)
Front mesh section (Art. No. E08SR0036)
Base panel (Art. No. E08SR0038)

SMART DETAILS

Logistics optimised – stackable,
- Fork-lift removal possible due to offset transoms
- Optional use of castors for the feet



Versatile – The stacking pallet can be adapted to almost any application purpose with add-on component parts.



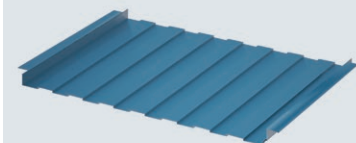
Complete remodelling – Additional insertion wall sections make a compact mesh box out of the light stacking pallet.

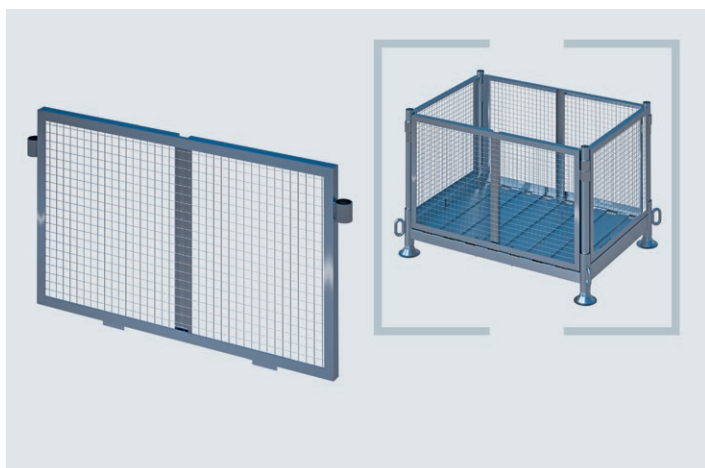
**Duralok base panel**

Reinforced base panel. As a spare part or for making a mesh box out of a Duralok stacking rack.

Info	H/L x B (m)	kg	Pack	Part No.	€/each
	1.25 x 0.85	19.50	1	E08SR0038	①

Price on request



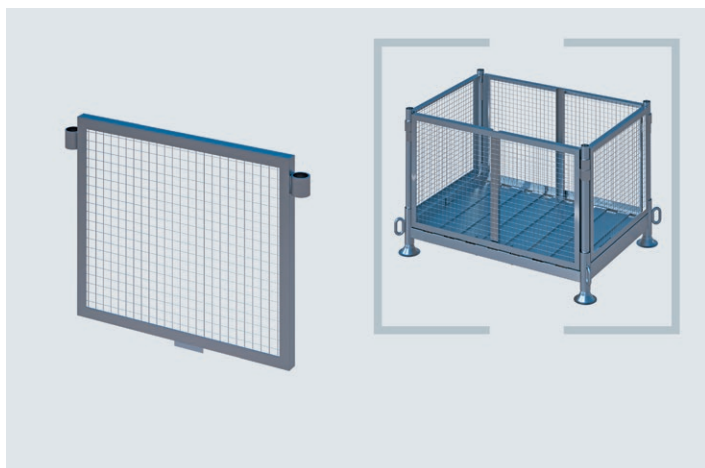


Duralok side mesh section

As a spare part or for making a mesh box out of a Duralok stacking rack.

Info	H/L x B (m)	kg	Pack	Part No.	€/each
	1.25	12.50	1	E08SR0035	①

Price on request

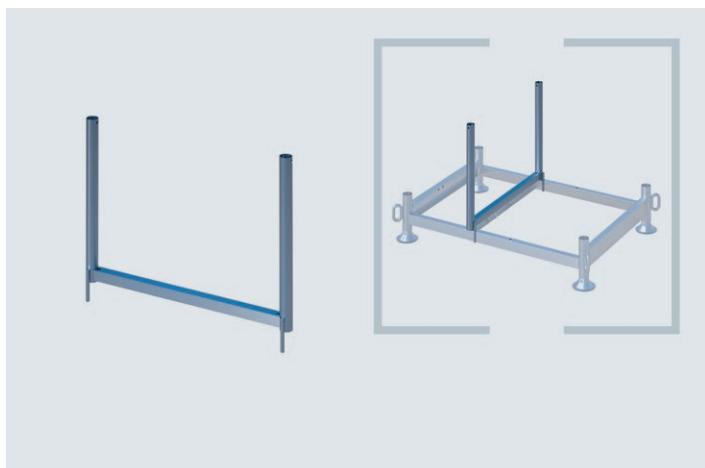


Duralok front mesh section

As a spare part or for making a mesh box out of a Duralok stacking rack.

Info	H/L x B (m)	kg	Pack	Part No.	€/each
	0.85	8.50	1	E08SR0036	①

Price on request

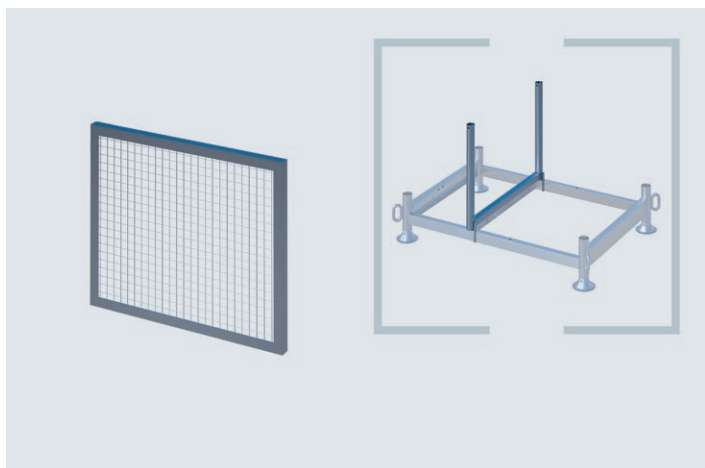


Central insertion frame

An intermediate element for the Duralok stacking rack for the storage and secure transport of short scaffold parts.

H/L x B (m)	kg	Pack	Part No.	for order volume of: €/each		
0.85	7.00	1	E08SR0034	1: 22.90	5: 18.50	10: 16.90 ①

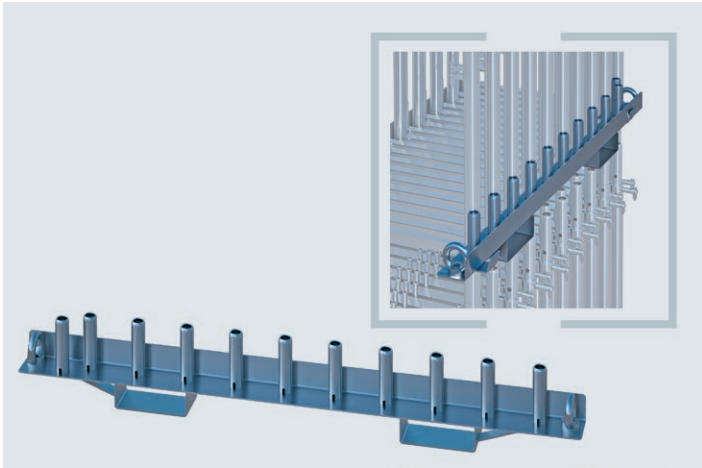
SNP



Duralok central mesh section

Partition wall for Duralok mesh box.

Info	H/L x B (m)	kg	Pack	Part No.	€/each
	0.80	7.90	1	E08SR0037	21.90 ①



Stacking grid for all scaffolding systems

For 20 vertical frames. Establishes order and provides for a clear overview in terms of storage and transport. Suitable for cranes as well as fork-lifts. Fits for all vertical frames with a tube diameter of 48.3 mm. 2 pieces are required at all times.

H/L x B (m)	kg	Pack	Part No.	for order volume of: €/each		
1.57 x 0.10	16.80	2	01533	1: 109.70	10: 95.60	20: 89.80

SNP



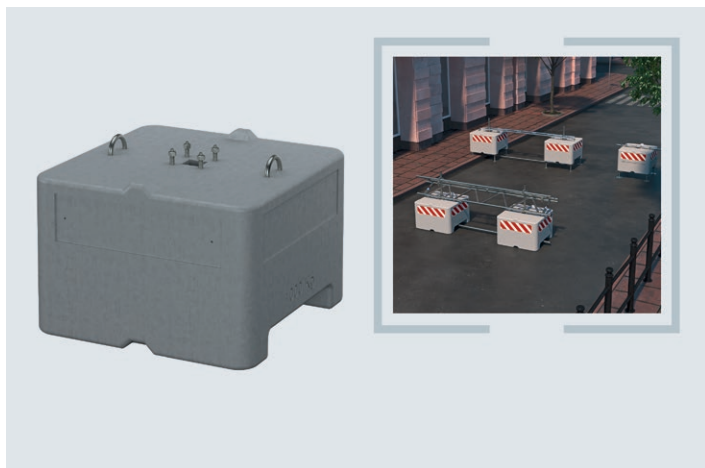
Support profile for stacking grid

In combination with the stacking grids, this article allows 2 or 3 units to be stacked on top of each other. Four pieces are required and they are positioned at the corners and attached to the tube connectors on the vertical frames.

H/L x B (m)	kg	Pack	Part No.	for order volume of: €/each		
1.50	1	01534	1: 9.80	20: 8.70	100: 8.20	①

SNP

Other models on request



Blocks of concrete ballast

Enormous diversity, looks good, perfect product design.

Uses: scaffold ballast, protective barrier, cable bridge, advertising medium, building-site safety etc.

The numerous connection alternatives as well as the product design, allowing for a combination of several blocks to a much larger unit, enable a diverse range of applications for events and construction sites. Optimally used as a ballast for freestanding scaffold structures. Here, too, given the many connection possibilities, new options present themselves for making effective use of ballast.

Blocks are available in 600 kg and 1,000 kg alternatives.

Concrete quality: high-performance min. C55/67

Density of normal concrete: 2.4 kg/dm

Surface: exposed concrete

Recommendation: combine a max. of 3 blocks vertically

Features:

Crane lugs, fork-lift capability

Spindles or castors can be fitted

Vertical combination since the blocks interlock with one another or from inserting scaffold tubes through the central scaffold tube opening

Horizontal connection with scaffold tubes

Combinable with scaffolding elements such as e.g. lattice girders

An adapter plate for the central attachment of square elements is optionally available

Advertising:

Can be supplied in RAL colours

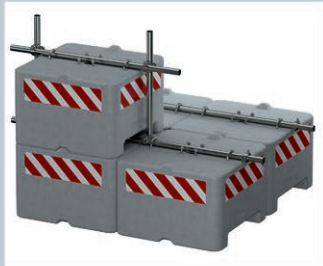
Stickers with company logo available

H/L x B (m)	kg	Pack	Part No.	for order volume of: €/each		
0.80 x 0.80	600.00	1	07047	1: 585.00	10: 425.00	20: 375.00
0.90 x 0.90	1,000.00	1	07046	1: 695.00	10: 495.00	20: 445.00

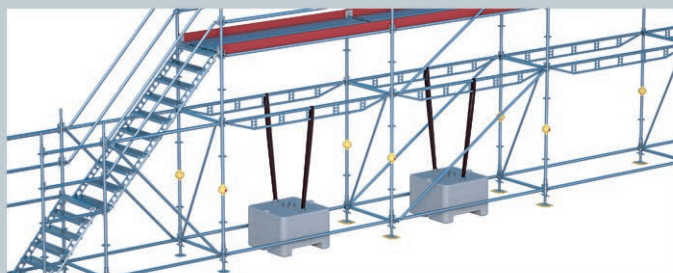
SNP

NEW

SMART DETAILS



Modular – The blocks ideally interlock with one another and can be combined vertically or horizontally to form stable units by using the integrated tube holding fixtures.



Practical – Blocks can be adapted to every scaffolding situation thanks to their many connection options and add-on possibilities – fork-lift optimised. Blocks have a weight

of one tonne and can be perfectly integrated into a company's corporate design through stickers bearing the company's logo or by applying individual colouring.



K++ proof of ownership

Individual and simple proof of ownership for new and existing material.

Most stickers can be removed from smooth surfaces quite simply, which makes them unsuitable as proof of ownership.

By contrast, our K++ sticker adheres extremely well to the substrate. Moreover, it cannot be removed in one piece, but only in mini shreds.

Please request our print requirements should you be interested:

4-colour digital print (CMYK)

160 mm x 50 mm (min. quantity 3,000 pieces)

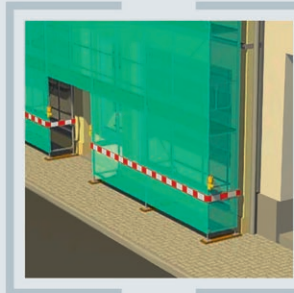
160 mm x 100 mm (min. quantity 5,000 pieces)

Approx. 5 years UV-resistant

Info	H/L x B (m)	kg	Pack	Part No.	€/each
	0.16 x 0.05	0.01	3000	07241	0.80
	0.16 x 0.10	0.01	5000	07242	0.98

NEW

Matching component part:
SCAFFGUARD aluminium rail
(Art. No. 07200)



Self-adhesive reflective foil, roll 90 mm x 50 m, red/white

Foil suitable as a warning sign e.g. for pedestrian tunnels. Fits into SCAFFGUARD aluminium rails (Art. No. 07200) for instance.

H/L x B (m)	kg	Pack	Part No.	for order volume of: €/each		
50.00 x 0.09	1.90	1	07240	1: 159.00	10: 128.00	25: 116.00

SNP

NEW



Premium set

Revolution R2 safety harness incl. fixed back anchorage extension of 0.80 m + Manyard connecting devices with shock-absorbing lanyards + equipment bag. The combination out of lanyard and back anchorage extension (approved as per EN 363) on the Revolution R2 safety harness enables work on scaffold bays up to a height of approx. 3.00 m.

Info	H/L x B (m)	kg	Pack	Part No.	€/each
Size S/M		3.05	1	06120	219.00
Size L/XL		3.20	1	06121	219.00

SNP



Revolution R2 safety harness

Front and back fall arrest anchorage, sharp-edge tested back anchorage extension of 0.80 m, express setting, automatic locking, protected label compartment, comfortable back padding, strap-end clip, integrated accessory system, comfortable elastic DuraFlex straps, swivel joint connection. Corresponds to EN 361.

Info	H/L x B (m)	kg	Pack	Part No.	€/each
Size S/M		1.58	1	06123	179.00 ①
Size L/XL		1.73	1	06124	179.00 ①

SNP

Other models on request

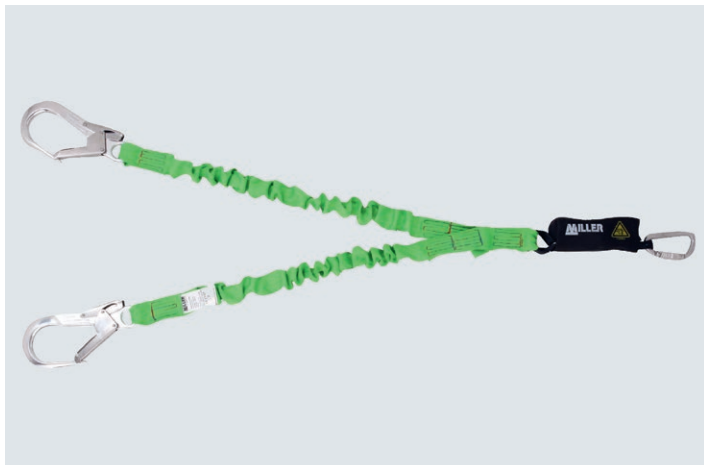


Manyard connecting devices with shock-absorbing lanyards

Sharp-edge tested, swivel design for more manoeuvrability, safety clip for attachment to safety harness, length 2.00 m, scaffold hook 63 mm. Horizontal approval (anchor point at foot height). Protected, new shock-absorbing lanyard package. Teflon-coated (longer service life). Corresponds to EN 354 and EN 355.

Info	H/L x B (m)	kg	Pack	Part No.	€/each
	2.00	1.00	1	06166	78.00

SNP



Twin Manyard connecting devices with shock-absorbing lanyards

Two-piece connecting device with shock-absorbing lanyards. Sharp-edge tested, swivel design for more manoeuvrability, safety clip for attachment to safety harness, length 2.00 m, scaffold hook 63 mm. Horizontal approval (anchor point at foot height). Protected, new shock-absorbing lanyard package. Teflon-coated (longer service life).

Info	H/L x B (m)	kg	Pack	Part No.	€/each
		1.50	1	06139	130.90

SNP

**PVC equipment bag (red)**

27 cm x 50 cm (D x L)

Info	H/L x B (m)	kg	Pack	Part No.	€/each
		0.40	1	06130	23.50

SNP

**Connecting device with shock-absorbing lanyard**

Sharp-edge tested, 12 mm woven inner core, 65 mm scaffold hook, length 2.00 m. Horizontal approval (anchor point at foot height). Protected, new shock-absorbing lanyard package.

Corresponds to EN 354 + EN 355 + EN 1891.

Info	H/L x B (m)	kg	Pack	Part No.	€/each
	2.00	1.15	1	06128	80.00

SNP

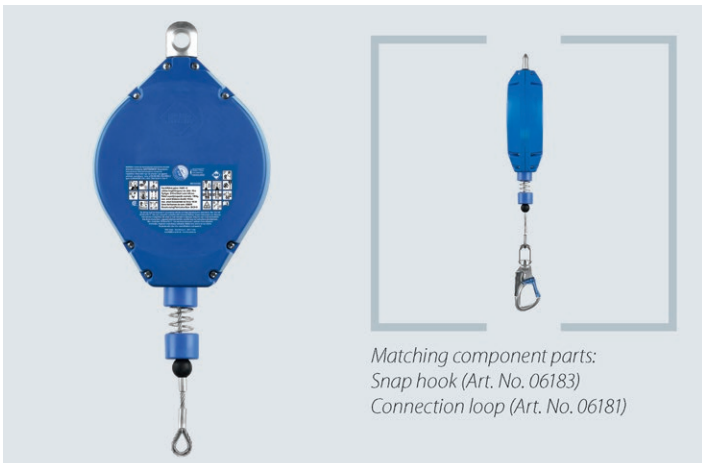
**Scorpion fall arrester**

Sharp-edge tested, Horizontal approval (anchor point at foot height), rapidly-triggered brake system, stops within a few millimetres, compact and light, length 2.70 m, corrosion-resistant material, Teflon-coated strap (longer service life).

Comes with 63 mm scaffold hook. Corresponds to EN 361.

Info	H/L x B (m)	kg	Pack	Part No.	€/each
	2.70	2.11	1	06127	169.00

SNP

**Fall safety protection device**

Comes with 18.00 m rope and blue plastic housing. Integrated fall impact absorber, snap hook with turbulence and fall display, with IKV 08. Safety device for horizontal and vertical applications. 15.00 m useful length, edge-tested steel rope.

Please also order: connection loop (Art. No. 06181) and steel snap hook (Art. No. 06183)!

Info	H/L x B (m)	kg	Pack	Part No.	€/each
		6.30	1	06180	357.50

SNP

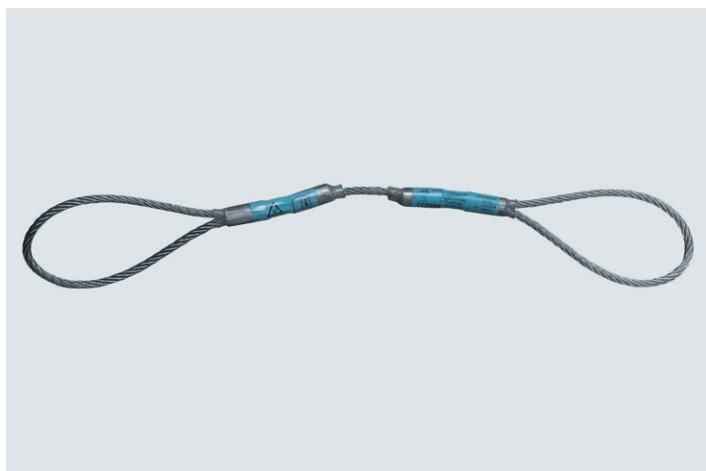
Matching component parts:
Snap hook (Art. No. 06183)
Connection loop (Art. No. 06181)



Snap hook HWPS 18

To be used in combination with the fall safety protection device HWPS 18 and e.g. Manyard or twin Manyard connecting devices.

Info	H/L x B (m)	kg	Pack	Part No.	€/each
		0.27	1	06183	11.25



Connection loop for fall safety protection device HWPS 18

To affix the safety device (lifeline) to the anchorage point on the scaffolding. 6 mm steel rope.

Info	H/L x B (m)	kg	Pack	Part No.	€/each
	0.50 x 0.06	0.20	1	06181	7.80



Rescue set ABS 3 WH

Comes with 20.00 m rope, 1 IK AB 100, 1 IKV 13, 1 telescopic rod, 1 carrier bag (41-RSET/20). Incl. hand wheel and crank to lift. Automatic speed control.

Info	H/L x B (m)	kg	Pack	Part No.	€/each
SC3	20.00	6.20	1	06184	629.00
SC3	40.00	6.20	1	06185	677.50
SC3	20.00	5.69	1	06186	554.00
SC3	40.00	5.69	1	06187	601.50

SNP

**Kask helmet**

Comfortable work safety helmet:

- High-density, impact-resistant outer shell with drip edge
- 390 g light
- 10 air slits for particularly good ventilation
- Protected by a high-strength, aluminium mesh
- Adjustment by means of hand wheel with rubberised outer ring for enhanced grip
- Adapter clips on the outer shell for the attachment of accessories such as head-lamps and various visors
- Internal padding can be washed at 30°
- Anti-allergic fabric with polygiene treatment prevents the growth of bacteria and bad odours
- Individually adjustable chinstrap with 4 anchor points
- Ring on chinstrap for attachment to belt or work gear
- Universally adjustable from 51 - 63 cm
- Corresponds to EN 397

Info	H/L x B (m)	kg	Pack	Part No.	€/each
white		0.56	1	07133	69.00
yellow		0.56	1	07170	69.00
orange		0.56	1	07171	69.00
red		0.56	1	07172	69.00
green		0.56	1	07173	69.00
british green		0.56	1	07175	69.00
royal blue		0.56	1	07176	69.00
blue		0.56	1	07177	69.00
black		0.56	1	07178	69.00

SNP

**Miller helmet**

Comes with chinstrap, red, with industrial approval as per EN397.

- Comfortable internal padding and chinstrap
- Good air circulation prevents the formation of moisture
- Universally adjustable from 51 - 61 cm
- Corresponds to EN 397

Info	H/L x B (m)	kg	Pack	Part No.	€/each
red		0.50	1	06134	59.00

SNP



PRICE EXAMPLES:

FRAMESCAFF PRICE EXAMPLES 2.57 M

Scaffold surface				
Scaffold surface in m ²		1,022	524	105
Scaffold length x working height in m		100.23 x 10.20	51.40 x 10.20	12.85 x 8.20

Basic equipment	Article No.			
Base jack 0.30 m	00357	80	42	12
Vertical steel frame FRAMESCAFF	E04FS0001	160	84	18
Back guardrail 2.57 m	E04FS0011	351	170	35
Front guardrail, double, 0.73 m	E04FS0022	6	6	4
Guardrail post	E04FS0025	38	19	4
Front guardrail frame	E04FS0027	2	2	2
Toe board for U-shaped hook-up, 2.57 m	E04FS0032	156	80	15
Toe board for U-shaped hook-up, 0.73 m	E04FS0034	8	8	6
Diagonal for field 2.57 m	07144	32	16	3
Steel deck 0.32 m for U-shaped hook-up	E04RS0943	312	160	30
All round price in EURO		41,394.20	21,350.20	4,489.10
Price per square metre in EURO		40.50	40.74	42.75

Additional equipment	Article No.			
Aluminium ladder frame with integrated ladder for U-shaped hook-up, 2.57 m	06090	4	4	3
Total price in EURO when 2 decks for each aluminium ladder frame are deducted		42,132.60	22,088.60	5,351.90
Weight in kg		12,690	6,519	1,341



PRICE EXAMPLES:

FRAMESCAFF
PRICE EXAMPLES 3.07 M

MEASURE CORRECTLY:



Scaffold surface				
Scaffold surface in m ²		1.033	532	101
Scaffold length x working height in m		101.31 x 10.20	52.19 x 10.20	12.28 x 8.20

Basic equipment	Article No.			
Base jack 0.30 m	00357	68	36	10
Vertical steel frame FRAMESCAFF	E04FS0001	136	72	15
Back guardrail 3.07 m	E04FS0012	297	153	28
Front guardrail, double, 0.73 m	E04FS0022	6	6	4
Guardrail post	E04FS0025	32	16	3
Front guardrail frame	E04FS0027	2	2	2
Toe board for U-shaped hook-up, 3.07 m	E04FS0033	132	68	12
Toe board for U-shaped hook-up, 0.73 m	E04FS0034	8	8	6
Diagonal for field 3.07 m	07145	28	16	3
Steel deck 0.32 m for U-shaped hook-up	E04RS0944	264	136	24
All round price in EURO		37,909.70	19,877.70	3,957.50
Price per square metre in EURO		36.70	37.36	39.18

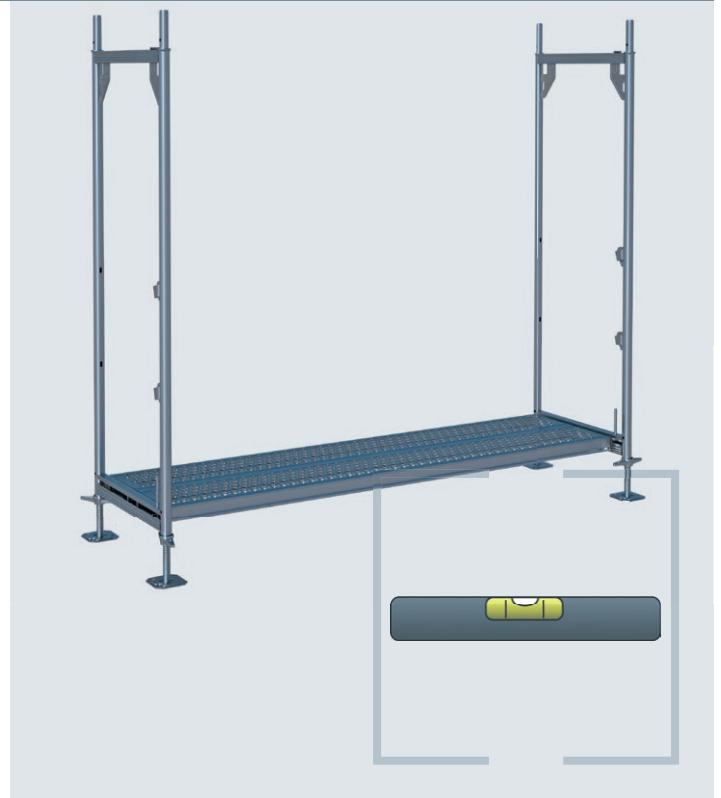
Additional equipment	Article No.			
Aluminium ladder frame with integrated ladder for U-shaped hook-up, 3,07 m	06091	4	4	3
Total price in EURO when 2 decks for each aluminium ladder frame are deducted		38,725.70	20,693.70	4,773.50
Weight in kg		11,799	6,162	1,195

ASSEMBLY - IN JUST A FEW STEPS TO A SOLID SCAFFOLD BASIS

Precise details on assembly and the various application options can be seen in the current version of the FRAMESCAFF Instructions for Assembly and Use. These can be found in the download section of the www.scafom-rux.de homepage.

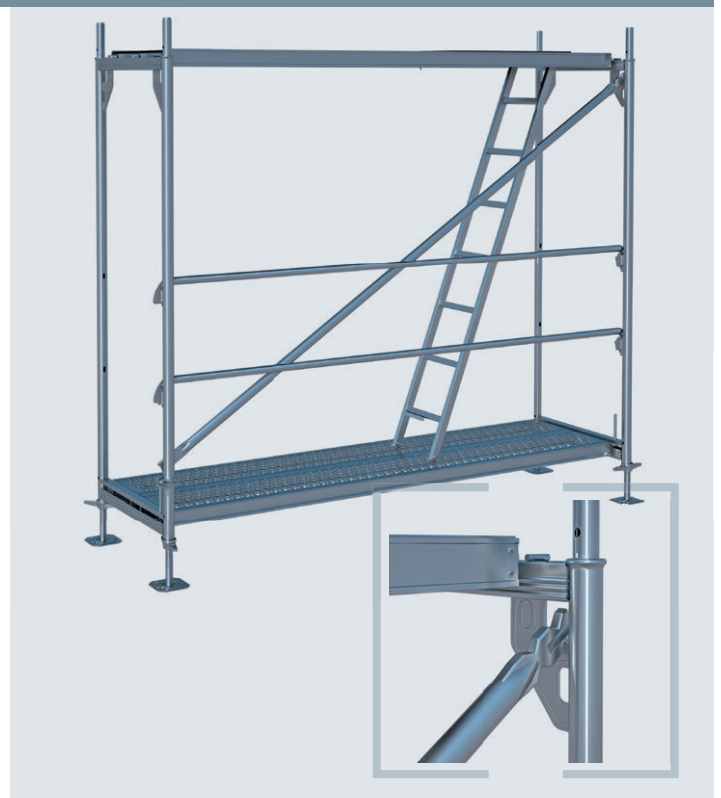
STEP 1: THE BASIS IS ESTABLISHED

The base jacks are positioned, levelled and fitted with starter transoms and decks. The scaffold base needs to be stable and horizontal. Subsequently, the first vertical frames can be mounted.



STEP 2: THE FIRST BAY

Diagonals and guardrails are fitted to the vertical frames. The frames are then aligned so as to be absolutely perpendicular and fixed there through the attachment of the diagonals. Decks provide the standing area for the next level. The first scaffold bay has now been established.



STEP 3: EXTENDING THE FIRST LEVEL

The scaffolding can be extended depending on the requirements. Care has to be taken to ensure that the connecting bay is assembled so as to be stable and horizontal.



STEP 4: SECOND LEVEL

The assembly of the second level begins with the insertion of the vertical frames onto the frames of the first level. This thereby secures the lower decks on the first level.



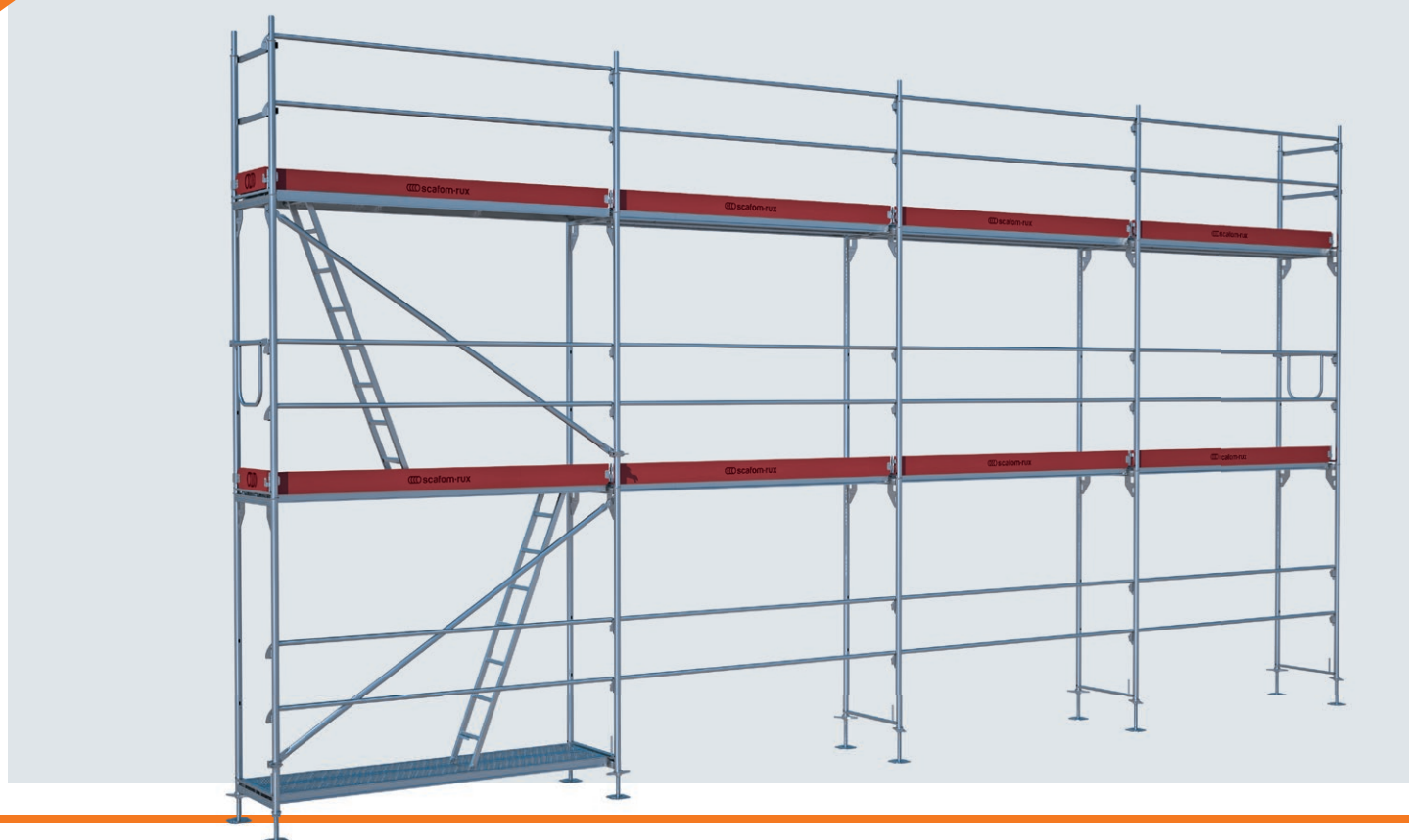
ASSEMBLY - FINISHED FAÇADE SCAFFOLDING MADE SIMPLE

STEP 5: ASSEMBLY IN THE SECOND LEVEL

After this, the decks, diagonals, guardrails and front guardrails are fitted in the second level and all necessary toe boards inserted. The scaffold is completed on the uppermost level by the guardrail posts together with the guardrails and on the sides by the front guardrail frames.



CAN BE EXTENDED AS REQUIRED



BUILDING-AUTHORITY APPROVALS FROM THE GERMAN INSTITUTE FOR STRUCTURAL ENGINEERING APPROVAL Z-8.1-924 FOR SCAFOM-RUX FRAMESCAFF

Bescheid

über die Änderung, Ergänzung und
Verlängerung der Geltungsdauer der
allgemeinen bauaufsichtlichen Zulassung
vom 31. März 2010

Zulassungsnummer:
Z-8.1-924

Antragsteller:
Scafom-rux Holding
De Kempen 5
6021 PZ BUDEL
NIEDERLANDE

Zulassungsgegenstand:
Gerüstsystem "FRAMESCAFF 73"

Dieser Bescheid ändert und ergänzt die allgemeine bauaufsichtliche Zulassung und verlängert die Geltungsdauer der allgemeinen bauaufsichtlichen Zulassung Nr. Z-8.1-924 vom 31. April 2010. Dieser Bescheid umfasst sieben Seiten und eine Anlage. Er gilt nur in Verbindung mit der oben genannten allgemeinen bauaufsichtlichen Zulassung und darf nur zusammen mit dieser verwendet werden.

1

Deutsches
Institut
für
Bautechnik

DIBt

Zulassungsstelle für Bauprodukte und Bauarten
Bautechnisches Prüfam

Eine vom Bund und den Ländern
gemeinsam getragene Anstalt des öffentlichen Rechts
Mitglied der EOTA, der UEAtc und der WFTAO

Datum:
09.06.2016

Geschäftszeichen:
I 37.1-1.8.1-14/16

3

Zulassungsnummer:
Z-8.1-924

4

Geltungsdauer
vom: **2. Mai 2016**
bis: **2. Mai 2021**

- 1 Deutsches Institut für Bautechnik (DIBt)

Registration Office for Building Products and Structural Designs

Structural Engineering Testing Agency

A public agency sponsored jointly by the federal and state governments

Member of EOTA, UEAtc and the WFTAO

Date: 09.06.2016
Reference: I 37.1-1.8.1-14/16
- 2 Notification regarding the modification, supplementation and prolongation of the general type approval dated 31 March 2010
- 3 Approval number: Z-8.1-924
- 4 Validity
from: 2 May 2016
to: 2 May 2016
- 5 Applicant:
Scafom-rux Holding
De Kempen 5
6021 PZ BUDEL
THE NETHERLANDS
- 6 Subject of approval:
Scaffolding system
"FRAMESCAFF 73"
- 7 This notification changes and supplements the general type approval and prolongs the validity of the general type approval No. Z-8.1-924 dated 31 April 2010.

This notification comprises seven pages and an appendix. It shall only apply to the above-mentioned general type approval and may only be used together with it.



SERVICE IS OUR HALLMARK, AND MARKING IS OUR SERVICE FOR YOU!

Ownership marking is becoming increasingly important – sometimes finance houses and insurers even demand this. But looking on the positive side: a professional external image and advertising impact should not be underestimated!

We offer various forms of material marking ranging from embossing and screen printing to solutions with stickers. Depending on the material, quantities involved and the motifs desired, there are a number of possible options which we would very much like to discuss with you in detail.



COATING

The classic solution for scaffolding! Just get some paint on it. That is exactly what we do with our rental material, too. Also available in fashionable RAL colours for your new material.



METAL EMBOSSING

We can supply individually embossed steel strip already affixed to the planks if desired. Individually embossed U-shaped caps are also available for SUPER planks.



OUR K++ STICKERS: YUCK!

Our K++ stickers are not quite as tasty as jelly babies, but they are just as colourful and a whole lot stickier – so at least it is two out of three points here! Moreover, they cannot be removed in a single piece, but only in shreds. And the best thing: they are available with your motif in small lot sizes!



EMBOSSING, COATING, STICKERS: **LAST!**

Anyone knowing a little about the whole thing, knows that it is not quite so easy to find marking solutions that last for a long time – and that is what is needed, of course. We work together with suppliers that are extremely proficient in the areas of embossing, marking, coating, labelling, adhesion etc.

Ask us to provide you with an individual quotation!



The **technical information** on our K++ stickers can be found in the download section of the scafom-rux.de homepage.



CALCULATOR, NEWS + MANUALS

You can access approval documents, technical details and manuals on our website with the APP. Our animations and current scafom-rux news are also available there.

So it is probably a good idea to surf over to the iOS or Android store and download the scaffold APP from there! Free of charge and without any in-app purchases.

QUICK ON-THE-SPOT ESTIMATE? APP-SOLUTELY NO PROBLEM!

Who doesn't know the situation: an impromptu enquiry and the customer is located along the way, so drive over quickly and have a look at the situation. Then the typical question: "Well, what sort of price can I expect?".

You will always have the answer right in your pocket: namely your smartphone with our scaffold APP. **This enables you to quickly calculate the parts needed for a façade or modular scaffolding as well as stair towers.** A few seconds later the customer has a general idea of the cost and you already have a rough parts list. You could even email us this list directly and make an order out of it. Not exactly unselfish, but still ingenious, isn't it?



NUMEROUS IMAGES, FEW WORDS: SCAFOM-RUX FILMS AND ANIMATIONS

Moving images providing information on the application, assembly and benefits of proven or new scafom-rux products? "Can't do any harm", we thought some years ago. In the meantime, the video library has grown to some 100 clips and the feedback from users proves that they are being readily used.

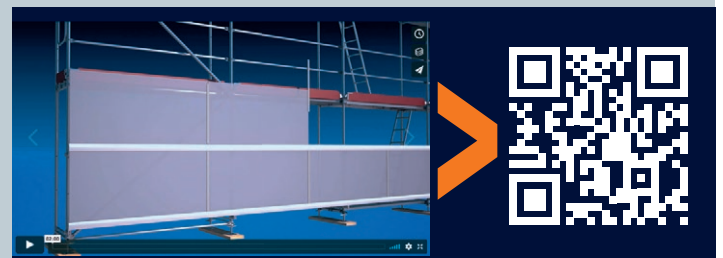
Our movies are available on **Youtube.de** and **Vimeo.com** – and this without any irritating advertising (apart from the film itself, of course). And when things get really tough, you can always use them to keep your interns quiet and happy for a while...

SORTED BY PRODUCT GROUPS, OPTIMISED FOR ALL DEVICES: [VIMEO.COM/RUXGMBH/ALBUMS](https://vimeo.com/ruxgmbh/albums)



E.g. SCAFFPLANK building site protection:

Protection against vandalism and noise as well as for passers-by during demolition work can be simply implemented through the use of standard planking that is just inserted into the system-independent SCAFFPLANK rails.



E.g. SCAFFGUARD scaffold cladding:

Economic, system-independent enclosures – and that with a minimal storage requirement. Building sites with scaffolding can be cladded very simply using SCAFFGUARD. System-independent!

MORE THAN 60 YEARS' EXPERIENCE

We have been involved in the manufacture of scaffolding for quite some time now. So it is not really surprising that our product ranges have been consistently adapted to meet market requirements and correspondingly enlarged.

But for all this, we have never lost sight of the fact that the user prefers specific components – namely those that are already in one's own stock. In other words, new products will always be confronted with the same question: "Is everything still compatible?".

Admittedly, we no longer have any parts in our ranges that are compatible with wooden ladder scaffolds... but otherwise we ensure economic product sustainability wherever it makes sense.

Our developments MULTI-ROOF and SCAFFPLANK are just two examples from many in this respect. The MULTI-ROOF solution can be accomplished using existing RINGSCAFF ledgers and in the case of SCAFFPLANK, existing decking can be used to protect the building site.

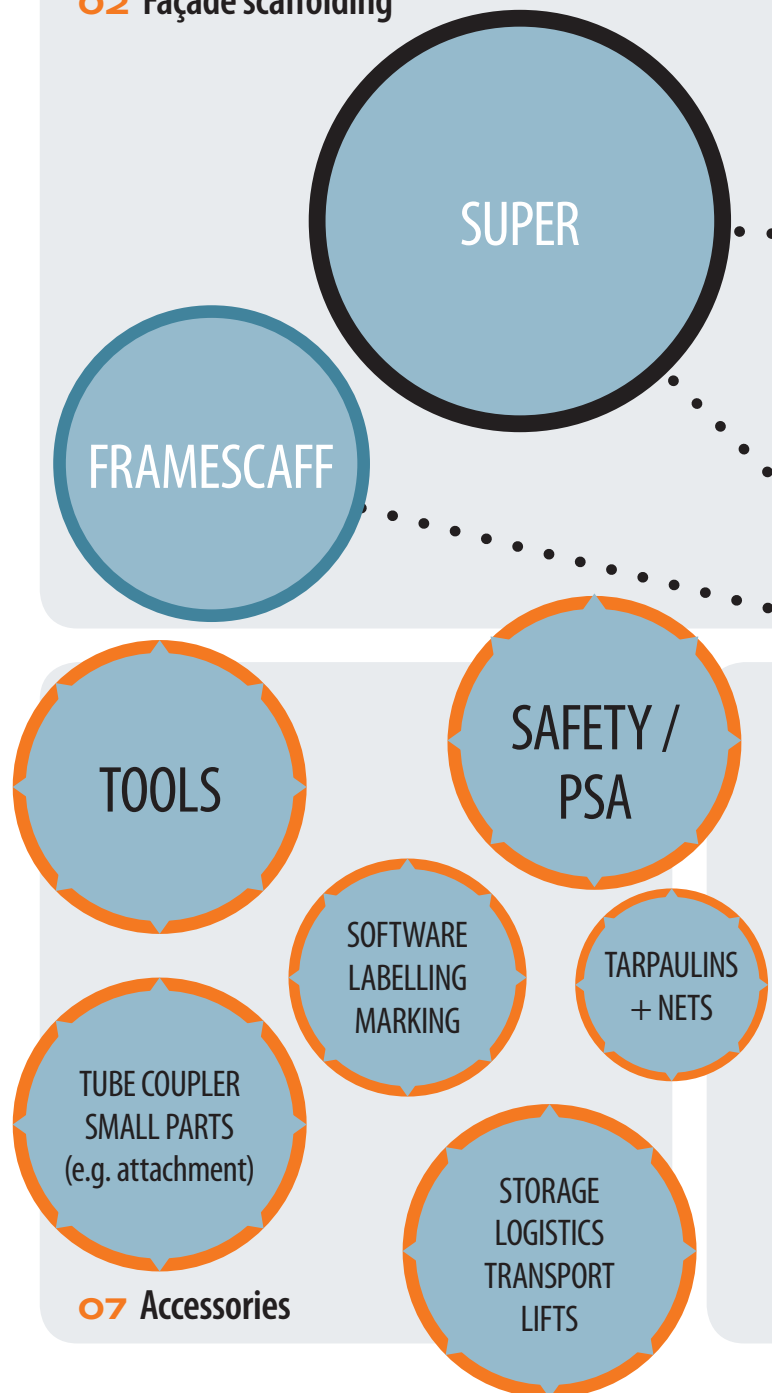
An intensive exchange with scaffold users additionally ensures that new developments really do make the daily work on the building sites easier: e.g. in terms of logistics, assembly and material optimisation and that they are, of course, needs-oriented. After all, you know best what you require in order to get the job done really well.

As an important part of the international scafom-rux group, we are more effective than ever: networked worldwide with specialists from development, manufacturing and application technology, we combine our profound expertise to go one step further in finding the best solution for your great projects. To put it in a nutshell:

SMART DETAILS, GREAT SOLUTIONS!

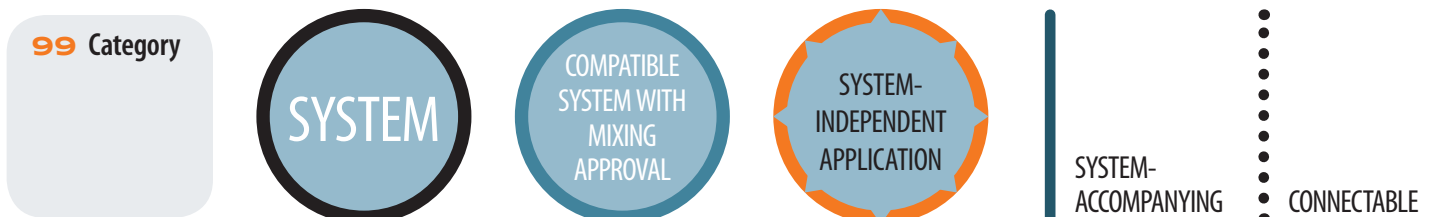
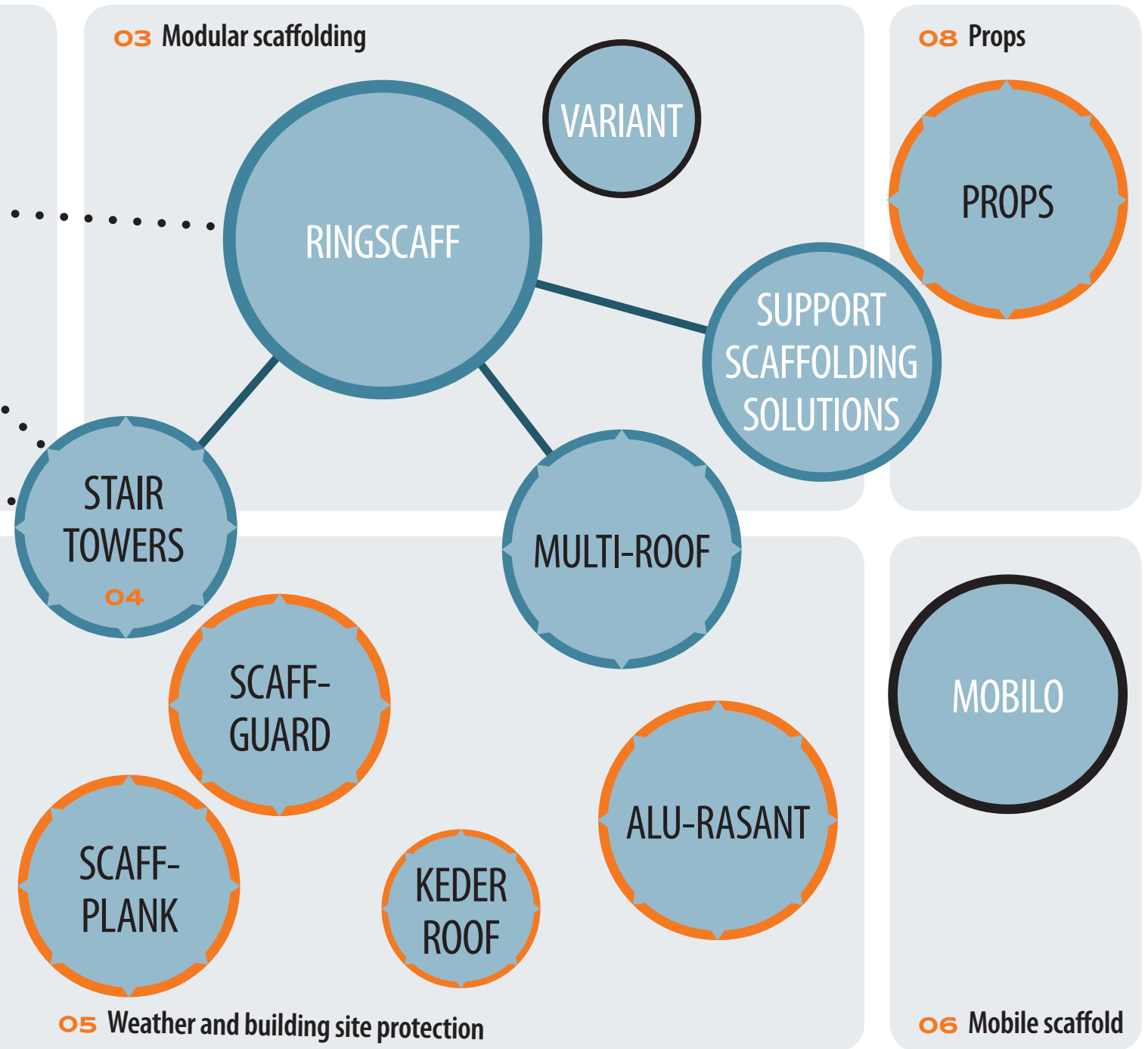


02 Façade scaffolding



07 Accessories

This overview shows you just how wide our product range is and how well one thing interconnects with the other.



RUX RENTAL - YOUR SCAFFOLD RENTAL COMPANY



RENTING INSTEAD OF BUYING - STAY LIQUID!

FAÇADE SCAFFOLDING, MODULAR SCAFFOLDING,
ACCESSORIES, STAIR TOWERS, ROOFING, LIFTS

In times like these, flexibility is absolutely essential if you wish to stay competitive. Renting scaffold material is a real alternative to buying both in terms of material availability as well as when peak order demands have to be met.

Our rental specialists will gladly inform you about when and for whom rental is worthwhile. Simply request our current price list or download it as a PDF directly from our website:

www.scafom-rux.de/download-center

**YOU HAVE THE PROJECT,
WE SUPPLY THE MISSING
PUZZLE PIECES**

- **Flexibility both financially and in terms of time**
- **Planning and calculation reliability**
- **Fixed, low monthly payments instead of high investments**
- **Original material in manufacturer quality**
- **Safeguarding of order peaks**
- **Closing investment gaps**



THE RUX RENTAL TEAM AVAILABLE FOR YOU

Telephone +49 (0)2331 47 09-333
Fax +49 (0)2331 47 09-222
E-Mail rental@scafom-rux.de



RENTAL AND COLLECTION DEPOTS IN GERMANY

Central Depot Hagen

Neue Str. 7
58135 Hagen
Telephone +49 (0) 2331 4709-333

Rental Depot Leipzig

An der Bahn 11
04319 Leipzig-Engelsdorf
Telephone +49 (0)341 251 38 05

Rental Depot Hamburg

Kulemannstieg 5
22457 Hamburg
Telephone +49 (0)40 54 80 57 48

Rental Depot Berlin

Zobtener Str. 73
10317 Berlin-Lichtenberg
Telephone +49 (0)30 51 58 88-22

Rental Depot Munich

Krautgartenstr. 36
85241 Hebertshausen
Telephone +49 (0)175 50 76 708

GENERAL TERMS AND CONDITIONS OF SALE, DELIVERY AND PAYMENT OF RUX GMBH (AS OF: 2017)

§ 1 – Applicability

- These general terms and conditions shall apply exclusively. Any terms and conditions of purchaser that are contrary or different to our terms and conditions shall not apply unless they have been expressly confirmed in writing. Our general terms and conditions of sale, delivery and payment shall also apply when we effect unconditional delivery to the purchaser although we are aware that the purchaser's terms and conditions are contrary or different.
- Our general terms and conditions of sale, delivery and payment shall also apply for all future transactions with purchaser.

§ 2 – Offers

- The offers and quotations we make shall be subject to confirmation in all parts.
- We reserve ownership rights as well as copyrights to illustrations, drawings, calculations and other documents. The documentation mentioned may not be made accessible to third parties without our express written consent.

§ 3 – Prices and terms of payment

- Insofar as nothing to the contrary has been agreed, our prices are quoted "ex works" excluding packaging and freight, which will be invoiced separately.
- All prices we quote are net amounts that are subject to value added tax at the statutory rate valid on the date of invoicing.
- Insofar as nothing to the contrary has been agreed contractually, the purchaser shall be deemed as in default at the latest 30 days after receipt of invoice or request for payment unless default has come about earlier on account of a reminder or overdue notice. The purchaser shall not be entitled to deduct discount without any specific written agreement in this respect.
- The purchaser shall only be entitled to offsetting rights when same's counter claims have been established in law, are undisputed or have been recognised by us. Moreover, the purchaser shall only be authorised to exercise a right of retention when the counter claim is based on the same contractual relationship as the claim for payment.
- An administration fee of EUR 20.00 will be levied on orders below a minimum order value of EUR 50.00.

§ 4 – Delivery and delivery period

- The periods and dates we indicate for delivery and execution shall be deemed as approximate unless a fixed deadline or date has been expressly assured or agreed. When shipments have been agreed, delivery periods and delivery dates shall refer to the time when the goods are handed over to a forwarding agent, carrier or other third party commissioned with the transportation.
- Should we be late in effecting delivery for reasons we are responsible for, purchaser's claims to compensation for the damage caused by the delay shall be limited to an amount of 0.5 % of the value of the delivery for each completed week of delay and to a maximum of 5 % of the value of the delivery. This limitation shall not apply when the delay has been caused with intent, by gross negligence or through the infringement of significant contractual obligations (these are obligations that need to be fulfilled to make the proper performance of the contract at all possible in the first place, whose observance our contractual partner may normally rely on).
- Both claims to compensation on the part of the purchaser for delays in delivery as well as claims for compensation in lieu of delivery going beyond the limits mentioned in Clauses 1. and 2. shall be excluded in all cases of delayed delivery, even after expiry of a deadline that may have been set us for delivery. This shall not apply in cases of intent, gross negligence or injury to life, body or health where liability is mandatory; an amendment of the burden of proof to the disadvantage of the purchaser is not associated with this. The purchaser may only withdraw from the contract within the framework of the statutory provisions when we are responsible for the delay in delivery.
- The purchaser shall, upon our request, be obliged to state within a reasonable period whether it will withdraw from the contract and/or demand compensation in lieu of performance or insist on performance as a result of the delay in delivery.
- Should the purchaser be in default of acceptance or infringe against other cooperation obligations, we shall be entitled to demand compensation for the resulting damage and, in addition, for any additional expenses incurred. In such cases, the risk of an accidental loss or deterioration of the purchased item(s) shall pass to the purchaser at that moment when same is in default of acceptance.
- Acts of God or operational disruptions affecting either us or our suppliers that, through no fault of our own, temporarily prevent us from supplying the contractual object(s) at the agreed time or within the agreed period shall correspondingly move backward the dates and prolong the periods mentioned in Clauses 1 to 5 of this paragraph by the duration of the default caused by these circumstances. The purchaser may withdraw from the contract if such disruptions result in a postponement in delivery of more than four months. Other cancellation rights shall remain unaffected by this.
- The adherence to agreed delivery dates or legally set delivery periods presupposes that we are supplied by our sub-suppliers punctually with the ordered input material or purchased parts necessary for the fulfilment of the order commissioned (reservation of self-supply). Should we not be able to adhere to agreed or set delivery periods as a result of non-punctual delivery from our sub-suppliers, we shall not be deemed to be in default when the input material was ordered in good time and we have otherwise made every reasonable effort to ensure punctual delivery of the input material.

§ 5 – Transfer of risk

- Insofar as nothing to the contrary has been contractually established, "ex works" delivery shall be deemed as agreed. This shall also apply when the purchased item(s) is/are despatched to another address at the request of the purchaser. The risk shall transfer to the purchaser when the purchased item(s) is/are handed over to the transport party.
- We shall take out transportation insurance for the delivery if this is requested by the purchaser; the costs resulting for this shall be borne by purchaser.
- The material is normally supplied unpacked and unprotected against rust. In the case of packed material, the purchaser assumes the obligation of unpacking and disposing of the packaging at own expense.

§ 6 – Warranty claims

- Warranty rights on the part of the purchaser are subject to it having properly exercised its inspection and complaint obligations pursuant to § 377 HGB (German Commercial Code). § 377 HGB shall also apply correspondingly when we are to purely perform work on behalf of the purchaser. Additionally, the delivered goods are to be properly and correctly stored, processed and used. Correct and proper storage of wooden material, for example, means it is appropriately ventilated. A correct and proper handling of scaffolding when it is assembled or disassembled necessitates compliance with all prescribed technical provisions including the DIN standards as well as observation of all approval requirements and state guidelines.
- Insofar as the purchased item(s) is/are faulty, we shall always be provided with an opportunity of putting things right first (supplementary performance) as per § 439 BGB (German Civil Code).
- Should we not be willing or able to rectify the situation or should such supplementary performance be delayed beyond a reasonable period of time on grounds that we are responsible for, or should supplementary performance be unsuccessful for other reasons, the purchaser shall be free to decide whether to withdraw from the contract or to demand a lowering of the purchase price (reduction).
- Insofar as nothing to the contrary has been agreed below, more far-reaching claims on the part of the purchaser – irrespective of the legal grounds – shall be deemed excluded. We are not therefore liable for claims that do not concern the delivered item itself: in

particular, we are not liable for missed earnings or other financial losses of the purchaser. The above exemption from liability shall not apply when the damage was caused through intent or gross negligence or in cases of injury to life, body or health. Similarly, it will not apply when we have assumed a guarantee for the quality of the item or its durability. The above exemption from liability shall again not apply to damage caused as a consequence of the culpable infringement of significant contractual obligations (these are obligations that need to be fulfilled to make the proper performance of the contract at all possible in the first place, whose observance our contractual partner may normally rely on). Insofar as it is not a case of intent or gross negligence or that we have assumed any guarantees, our liability in such situations shall be limited in terms of its amount to the level of foreseeable damage typical for this type of contract.

- Any warranty claims on the part of the purchaser shall be barred after twelve months. This shall not apply when longer periods as per § 438 [1] No. 2 BGB (Construction Work and Objects for Construction Work), § 479 [1] BGB (Right of Recourse) and § 634a [1] No. 2 BGB (Construction Defects) are required by law.

§ 7 – Total liability

- More far-reaching liability for compensatory damages and reimbursement of expenditure than that envisaged in § 6 – irrespective of the legal nature of the asserted claim – shall be deemed excluded. This provision shall not apply to claims that are filed against us pursuant to §§ 1 and 4 of the Product Liability Act. Similarly, the exclusion of liability shall not apply in cases of intent, gross negligence, injury to life, body or health or when significant contractual obligations are infringed (these are obligations that need to be fulfilled to make the proper performance of the contract at all possible in the first place, whose observance our contractual partner may normally rely on). However, the amount of the claim for damages in the event of infringement of significant contractual obligations shall be limited in terms of its amount to the level of foreseeable damage typical for this type of contract insofar as it is not a case of intent or gross negligence or there is liability on account of an injury to life, body or health. An amendment of the burden of proof to the disadvantage of the purchaser is not associated with the above provisions.
- Insofar as our liability is excluded or limited, this shall also extend to the personal liability of our employees, workforce, staff members, representatives and agents.

§ 8 – Retention of title

- We reserve the right of ownership to the purchased item until full payment of the purchase price including the incidental expenses (freight, packing etc). In the event of any behaviour on the part of the orderer that is contrary to the contractual obligations, in particular in a case of default in payment, we shall be entitled to withdraw from the contract and take back the purchased item. We shall be authorised to remarket the purchased item after taking it back. After deducting the appropriate amount of remarketing costs, the remaining proceeds shall be set off against the obligation of the orderer.
- The purchaser shall be obliged to treat the purchased item(s) carefully. Same shall insure such at own expense against fire, water and theft with the insured sum being adequate to cover the replacement value. The purchaser shall carry out any service and maintenance work that may be or become necessary in good time and at own expense.
- The purchaser shall be obliged to notify us immediately in writing of any seizure or other interventions of third parties. In such cases, the purchaser is also obliged to support us in full in the court and out-of-court assertion of our rights, in particular to furnish us with the necessary documents.
- The purchaser shall be entitled to resell the purchased item(s) in the ordinary course of its business. However, the purchaser here-with already assigns all its claims against its customers or third parties arising from such reselling in the amount of the final invoice amount (including VAT). This assignment shall apply irrespective of whether the purchased item(s) is/are resold without or after being processed. We herewith accept such assignment. The purchaser shall remain entitled to collect its claims within the framework of its ordinary course of business. This entitlement shall lapse when the purchaser does not meet its payment obligations out of the proceeds received, or when same defaults in payment. It also lapses when application is made for the opening of insolvency or composition proceedings on purchaser's assets or when the purchaser suspends payments. In such cases, we shall be entitled to collect the assigned claim ourselves. The purchaser shall be obliged to provide us with all the necessary information and associated documents to enable collection. In such a case, the purchaser shall also be obliged to notify the debtor (third party) of the assignment.
- The processing or transformation of the purchased item(s) is always done on our behalf by the purchaser. If the purchased item(s) is/are processed with other objects not belonging to us, we acquire co-ownership of the new item in the relation of the value of the purchased item(s) to the other processed item(s) at the point in time of processing. Incidentally, the same shall apply to the object(s) created in the processing operation as for the purchased item(s) supplied under retention of ownership.
- If the purchased item(s) is/are inseparably combined with other objects not belonging to us, we acquire co-ownership of the new item in the relation of the value of the purchased item(s) to the other combined item(s) at the point in time of processing. If combination has meant that the object of the purchaser is to be considered the main item, it shall be deemed as agreed that the purchaser proportionately transfers co-ownership. The purchaser shall safe-keep the resulting sole or co-ownership on our behalf.
- At the request of the purchaser we undertake to release the collateral we are entitled to when the realisable value of the collateral exceeds the claim to be secured by more than 10 %. We shall select the collateral to be released at our own discretion. In such cases, the purchaser shall mark the scaffolding material in its possession in such a way that it is possible to unambiguously identify the material still standing in our ownership. Should the assignment of claims be waived, the purchaser shall be obliged to previously disclose all its claims resulting from the sale of scaffolding material.

§ 9 – Place of fulfilment, applicable law and place of jurisdiction

- Insofar as nothing to the contrary has been agreed contractually, the place of fulfilment shall be the registered offices of the company. These are located in Hagen.
- The law of the Federal Republic of Germany shall apply exclusively to all business relations with us. Application of the UN Convention on Contracts the International Sale of Goods shall be deemed excluded.
- Insofar as the purchaser is a qualified businessperson, the courts of the Federal Republic of Germany shall have international jurisdiction in the event of any legal disputes. The place of jurisdiction shall in all events be the location of our company. We are however entitled to bring proceedings against the purchaser at same's general place of jurisdiction. This competency provision shall also apply for claims arising out of bills of exchange or cheques.
- Should the purchaser infringe against VAT law provisions, in particular with regard to stating a VAT ID number, the purchaser shall be obliged to compensate us for any taxation disadvantage thus ensuing. We reserve the right to file more far-reaching claims for damages.

§ 10 – Final provisions

Should these general terms and conditions of sale, delivery and payment contain any loopholes, it shall be deemed as agreed that they be replaced by such legally effective provisions that the parties to the contract would have agreed upon in view of the commercial objectives of the contract and the purpose of these general terms and conditions of sale, delivery and payment if they had known about such loopholes.

ORDER FAX

**Simply copy the fax form,
fill it in and fax it to:
+49 (0) 2331 4709-222**

Firm:	Customer No.:
Street:	Tel.:
Country/Postcode/Town:	Fax:
Purchaser:	Email:

☐ ORDER / ☐ ENQUIRYOrder confirmation/Please send offer ☐ by post / ☐ by fax / ☐ by e-mail

Goods designation	Article No.	Quantity	Unit price €	Value of goods €
Order value €				

Date:	The General Sales, Delivery and Payment Terms and Conditions of RUX GmbH shall apply. Any secondary agreements, subsequent amendments or other assurances that may have been made will strictly need to have been confirmed in writing to be valid.
Delivery address:	
Street:	
Country/Postcode/Town:	
Contact person on delivery:	
Tel.:	Stamp/Signature:



SMART DETAILS
FRAMESCAFF | FAÇADE SCAFFOLDING

MODULAR SCAFFOLDING
FAÇADE SCAFFOLDING
WEATHER PROTECTION
BUILDING SITE PROTECTION
MOBILE SCAFFOLDS
PROPS
ACCESSORIES
IDEAS

**SMART
DETAILS
GREAT
SOLUTIONS!**



APP



Vimeo | YouTube



FACEBOOK



SCAFOM-RUX.DE

scafom-rux Deutschland · RUX GmbH
Neue Str. 7 · 58135 Hagen · Germany
T +49 2331 4709-0 · info@scafom-rux.de

 **scafom-rux**